

# Expression Web Lab Exercises

---

Expression Web Quick Start Tutorial

## Heavy Metal Show Car

*By Aseem Badshah*



Information in this document, including URL and other Internet Web site references, is subject to change without notice. Unless otherwise noted, the example companies, organizations, products, domain names, e-mail addresses, logos, people, places, and events depicted herein are fictitious, and no association with any real company, organization, product, domain name, e-mail address, logo, person, place, or event is intended or should be inferred. Complying with all applicable copyright laws is the responsibility of the user. Without limiting the rights under copyright, no part of this document may be reproduced, stored in or introduced into a retrieval system, or transmitted in any form or by any means (electronic, mechanical, photocopying, recording, or otherwise), or for any purpose, without the express written permission of Microsoft Corporation.

The names of manufacturers, products, or URLs are provided for informational purposes only and Microsoft makes no representations and warranties, either expressed, implied, or statutory, regarding these manufacturers or the use of the products with any Microsoft technologies. The inclusion of a manufacturer or product does not imply endorsement of Microsoft of the manufacturer or product. Links are provided to third party sites. Such sites are not under the control of Microsoft and Microsoft is not responsible for the contents of any linked site or any link contained in a linked site, or any changes or updates to such sites. Microsoft is not responsible for webcasting or any other form of transmission received from any linked site. Microsoft is providing these links to you only as a convenience, and the inclusion of any link does not imply endorsement of Microsoft of the site or the products contained therein.

Microsoft may have patents, patent applications, trademarks, copyrights, or other intellectual property rights covering subject matter in this document. Except as expressly provided in any written license agreement from Microsoft, the furnishing of this document does not give you any license to these patents, trademarks, copyrights, or other intellectual property.

©  2008 Microsoft Corporation. All rights reserved.

The names of actual companies and products mentioned herein may be the trademarks of their respective owners.

## Setup

All of the files and images needed to complete the activities in this Quick Start guide are located in the accompanying **Heavy Metal Resources** file. Extract this file to a convenient location where student files are typically stored. IN Exercise 1, Task 1, students will be instructed to move this resources folder into the folder Expression Web creates when a new Web site is created. Depending upon the network or computer configuration for storing student files, the instructor may want to demonstrate that step. Files will be extracted to a folder named **Heavy Metal Resources**.

For reference, the completed site files are also located in the **Expression Web Quick Start Tutorial Heavy Metal** folder.

The screenshots of Expression Web in this tutorial are shown in the **Default Windows** color scheme of Expression Web and may not be the same colors as the version of Expression Web installed on student computers. If desired, set the Expression Web color scheme to your current Windows color scheme. Click **Application Options** on the **Tools** menu. In the **Application Options** dialog box select the **Use your current Windows color scheme** option.

You will also need to download and install the Microsoft® .NET Framework version 3.5 (which includes the Microsoft AJAX extensions) to complete parts of this lab exercise, available from the links below.

The .NET Framework 3.5:

<http://www.microsoft.com/downloads/details.aspx?FamilyID=333325FD-AE52-4E35-B531-508D977D32A6&displaylang=en>

## Scenario

This fast paced lesson introduces you to Microsoft Expression® Web. It is designed to help beginners create HTML pages with layers, Cascading Style Sheets (CSS), interactive buttons, and Dynamic Web Templates. By the end of these exercises, you will have created a simple standards-compliant Web site about Richard Tapia’s amazing, award-winning 1970 Chevelle show car – Heavy Metal.

Dr. Tapia is a computer science professor whose moveable work of art has taken first prize at national car shows!

In order to create this site, you will learn to use the tools in Expression Web to edit Web documents in Design view in order to create a site that is ready for publishing to the Web. In these lab exercises you will become familiar with Web-based technologies such as cascading style sheets (CSS), HTML, interactive buttons, and Dynamic Web Templates.

Below is a sneak peek of the “Heavy Metal” Web site that you will create with this tutorial.

Keep track of your progress in this tutorial by checking the box at the end of each task and exercise.





Study the Expression Web Workspace below. Become familiar with the tools, tabs and panels identified. They will be referenced in the directions throughout this tutorial.

**The Microsoft® Expression® Web Workspace**

Heavy Metal Chevelle (C:\Users\Aseem\Documents\Microsoft\Expression Web Campaign\Tutorial\Heavy Metal\HeavyMetal\_LastName\index.html) - Microsoft Expression...

File Edit View Insert Format Tools Table Site Data View Task Panes Window Help

Folder List

Web Site index.html exterior.html interior.html

HEAVY METAL CHEVELLE

Specifications Exterior Interior

The Beginning

Dr. Richard Tapia is a famous mathematician and Rice University in Houston, Texas, but he has a love goes back to his youth when he and his brother, Bc build cars and drag race in Los Angeles, California

1. Common Toolbar  
 2. Folder List  
 3. File Tabs  
 4. Toolbox  
 5. Style and Layer Task Panes  
 6. View Tabs  
 7. Tag and CSS Property Task Panes  
 8. Bread Crumb Trail

## Exercises

**EXERCISE 1 - Creating a New Web Site**

**EXERCISE 2 - Creating Page Layouts with Layers**

**EXERCISE 3 - Styling Your Web Site Using CSS**

**EXERCISE 4 – Creating More Pages**

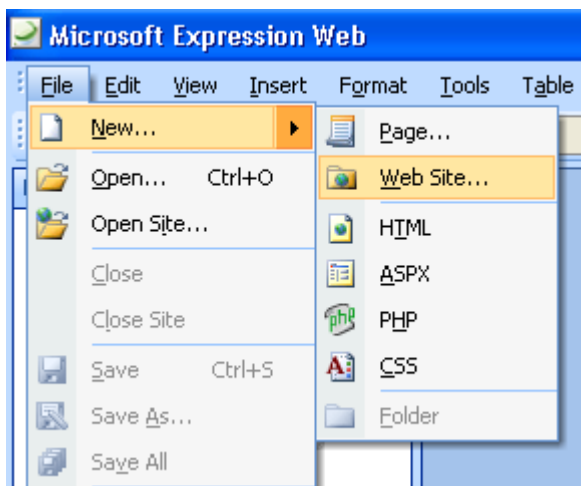
## Exercise 1: Creating a New Web site

**Scenario:** You will create a new, empty Web site and a blank HTML page, and change its properties.

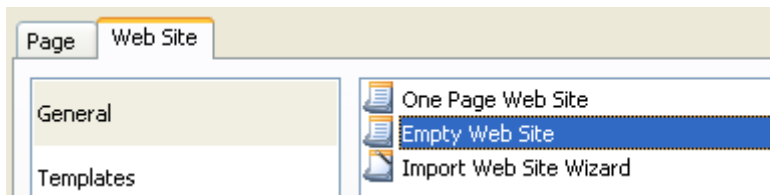
### Task 1: Create a new empty Web site

You will create the basic framework for your new Web site structure.

1. Click **Start**, point to **All Programs**, point to **Microsoft Expression**, and then click **Microsoft Expression Web**.
2. Using the image of the Expression Web Workspace, locate the **View Tabs**. Click on the **Design** tab to set the work environment to the correct view for this tutorial.
3. On the **File** menu, point to **New**, and then click **Web Site**.



4. In the **New** dialog box, on the **Web Site** tab, click **General**, and then click **Empty Web Site**.



5. Click **Browse** to specify the location of the new Web site and click **Open** once a convenient location has been found.
6. To specify a name for the Web site, highlight the automatically generated name at the end of the path and enter a new name to replace it.

For this example, call this site **HeavyMetal\_LastName**. (Replace the words "Last Name" with your last name.)

7. Click **OK** to create and save the Web site.
8. Using **Windows Explorer**, move (or copy and paste) the **Heavy Metal Resources** folder from the **Expression Web Quick Start Tutorial Heavy Metal** folder to the folder that was created for this new Web site. The instructor will demonstrate this step if necessary.

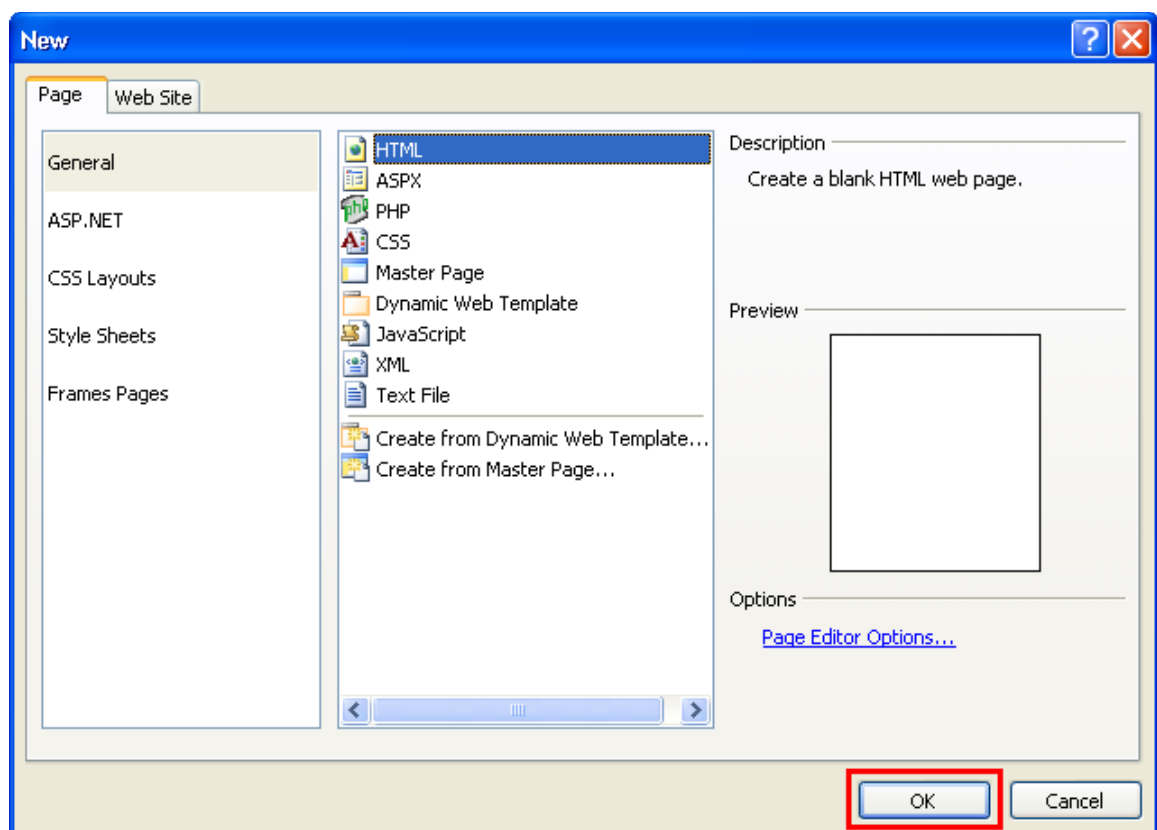
You will find the Web site folder in the location that was chosen in step 4.

**Task 1 is complete.**

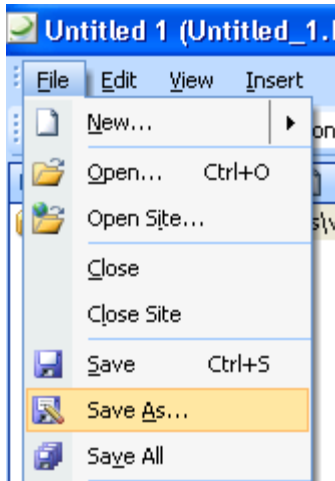
## Task 2: Create a new HTML page

You will create the HTML page that will be the home or first page of the Web site and set its page properties.

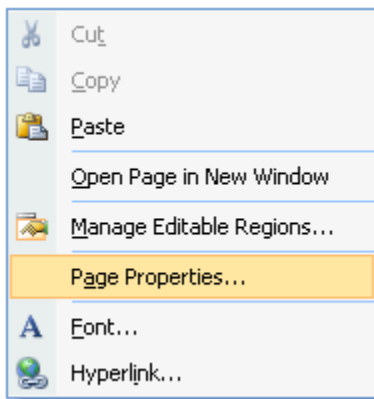
1. On the **File** menu, point to **New**, and then click **Page**.
2. In the **New** dialog box, click **General**, then click **HTML** and click **OK**.



3. On the **File** menu, click **Save As**.



- In the **Save As** dialog box, in the **File name** box, type **index.html** and then click **Save**. You are calling the page **index.html** because most web servers will recognize this filename as the home page.
- Right-click anywhere on the blank page (in design view) and select **Page Properties**.



- Under the **General** tab, specify the values in the following table. This will help users and search engines know what the page is about.


Property	Value
Title	Heavy Metal Chevelle
Page Description	This site is about Dr. Richard Tapia's 1970 Chevelle show car called Heavy Metal.
Keywords	chevelle, show, car, heavy, metal

Title:

Page description:

Keywords:

Base location:

Default target frame:  



7. Under the **Formatting** tab, specify the colors in the following table. This will change the color of all links on the page.

Property	Value
Hyperlink	A dark Gray
Visited hyperlink	A dark Red
Active hyperlink	Gray
Hovered hyperlink	Gray

Colors

Background:  Automatic  Hyperlink:

Text:  Automatic  Visited hyperlink:

Active hyperlink:

Hovered hyperlink:

8. Under the **Advanced** tab, set all of the margins to **0**. This will get rid of the default space that creates a small margin around the edge of the Web page when displayed in a browser.

Margins

Top Margin:

Left Margin:

Bottom Margin:

Right Margin:

9. Click **OK** to close the **Page Properties** dialog.

**Task 2 is complete.**

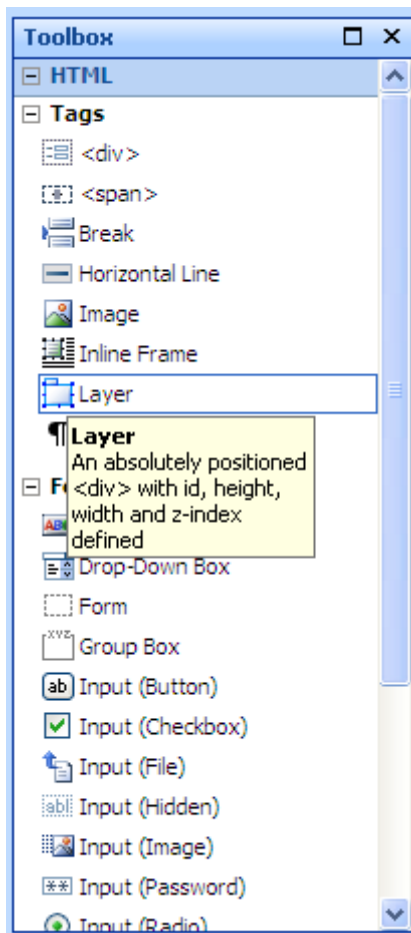
## Exercise 2: Creating Page Layouts with Layers

**Scenario:** You will layout your page using layers and CSS Properties. You will then add images and text into those layers.

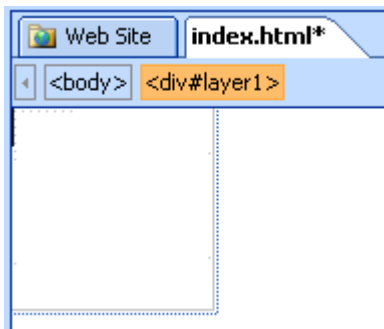
### Task 1: Create a layer and add an image

You will create a layer using the toolbox and then insert the header image into the layer.

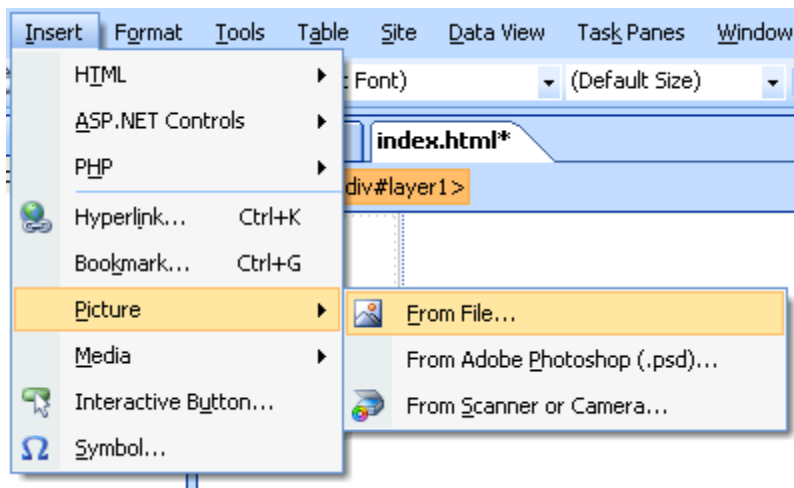
1. In the **Toolbox**, click **Layer** and drag it onto the page.



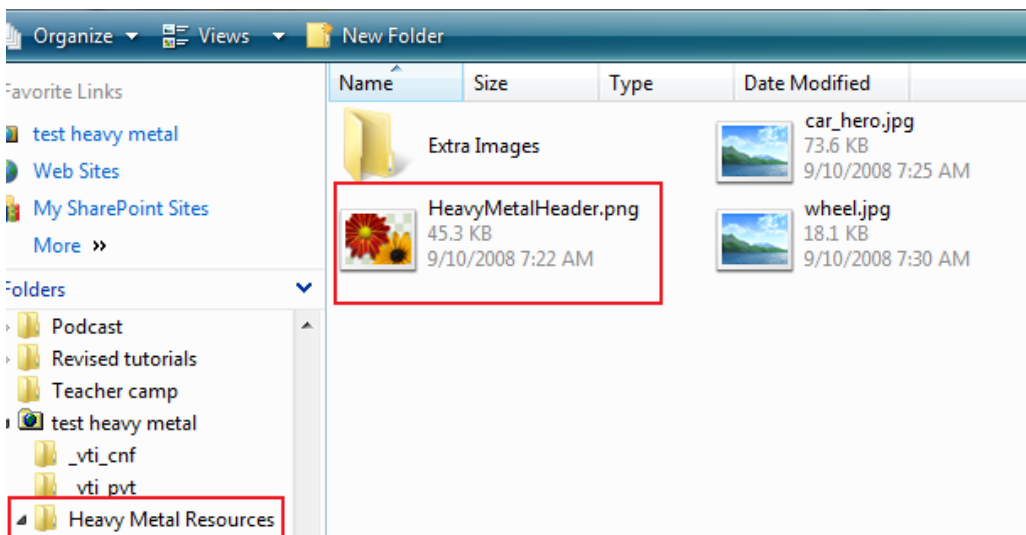
2. Click inside the new layer to place the cursor within the layer.



3. On the **Insert** menu, point to **Picture** and click **From File**.

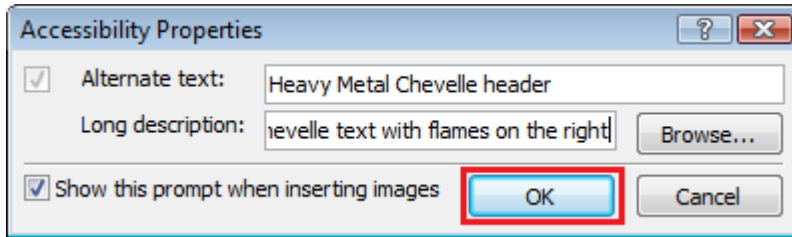


4. In the **Picture** dialog box, navigate to the **Heavy Metal Resources** folder in your Web site and select **HeavyMetalHeader.png**.



5. Click **Insert** to add the picture to your site.
6. In the **Accessibility Properties** dialog, specify the values from the following table and click **OK**. This will help users with limited vision and search engines identify the image.

Property	Value
Alternate text	Heavy Metal Chevelle header
Long description	Heavy Metal Chevelle text with flames on the right



7. On the **File** menu, click **Save**.

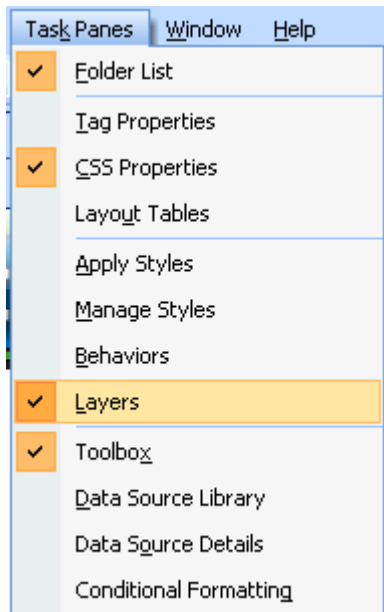


**Task 1 is complete.**

## Task 2: Make the layer fit the image

You will make the layer fit the image using CSS Properties.

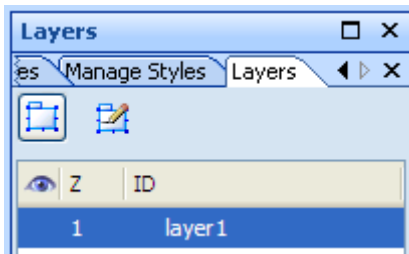
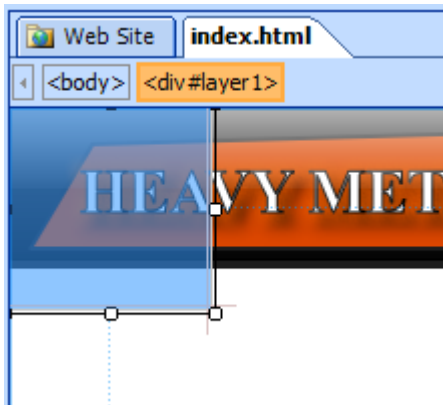
1. On the **Task Panes** menu, ensure **Layers** is checked.



2. Select the **Layers** tab from the bottom right task pane. You may need to click the right arrow if the **Layers** tab is not visible.

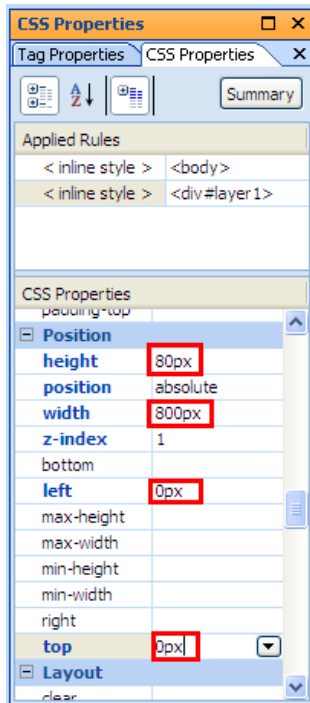
3. Click **layer 1** on the **Layers** task pane.

The layer should be highlighted in blue on the workspace.



- With the layer highlighted, click the CSS Properties task pane (generally found in the bottom left corner of the work space) and specify the values in the following table. These properties are located in the section of the list titled "Position." You might need to scroll down through the properties to find them. Height and width are in a blue font. This will make your layer fit the header image perfectly.

Property	Value
height	80px
width	800px
left	0px
top	0px



- On the **File** menu, click **Save**.

**Task 2 is complete.**



### Task 3: Add another layer and hero image

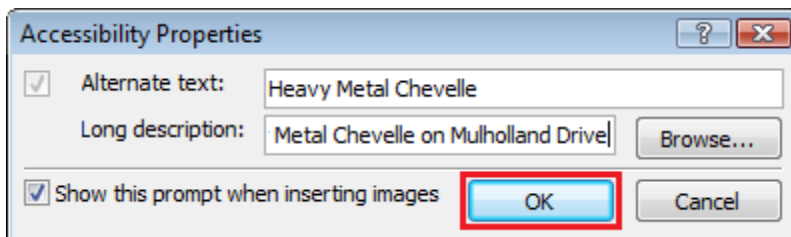
You will use the toolbox to add another layer and will add a hero image into that layer.

1. In the **Toolbox**, double click **Layer**.
2. Click inside the new layer to place the cursor within the layer.

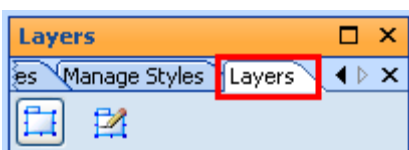


3. On the **Insert** menu, point to **Picture** and click **From File**.
4. In the **Picture** dialog box, navigate to the **Heavy Metal Resources** folder in your Web site and select **car\_hero.jpg**.
5. Click **Insert** to add the picture to your site.
6. In the **Accessibility Properties** dialog, specify the values from the following table and click **OK**.

Property	Value
Alternate text	Heavy Metal Chevelle
Long description	Heavy Metal Chevelle on Mulholland Drive

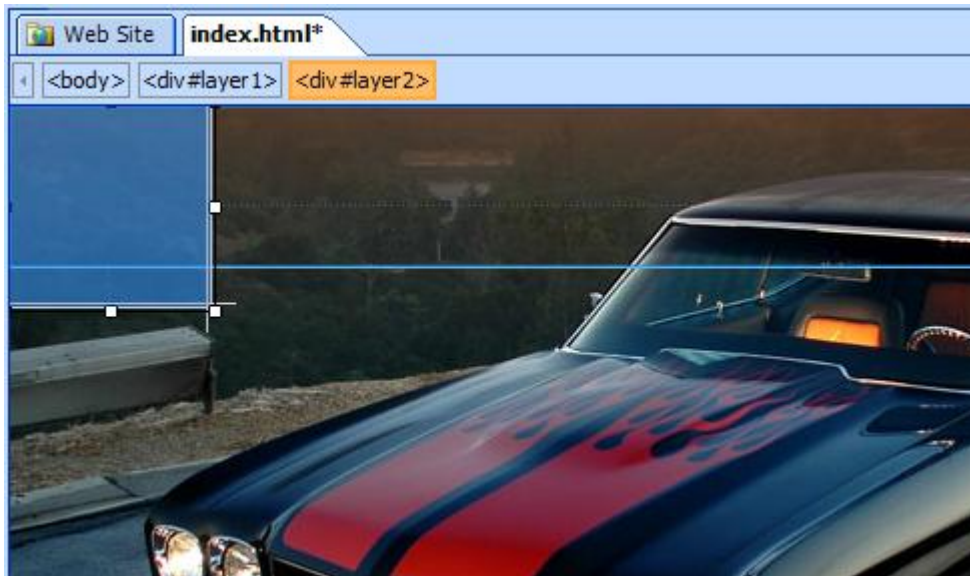


7. Select the **Layers** tab from the bottom right task pane.



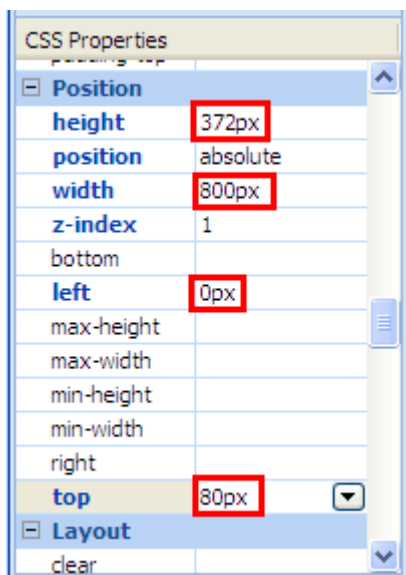
8. Click **layer 2** on the **Layers** task pane.

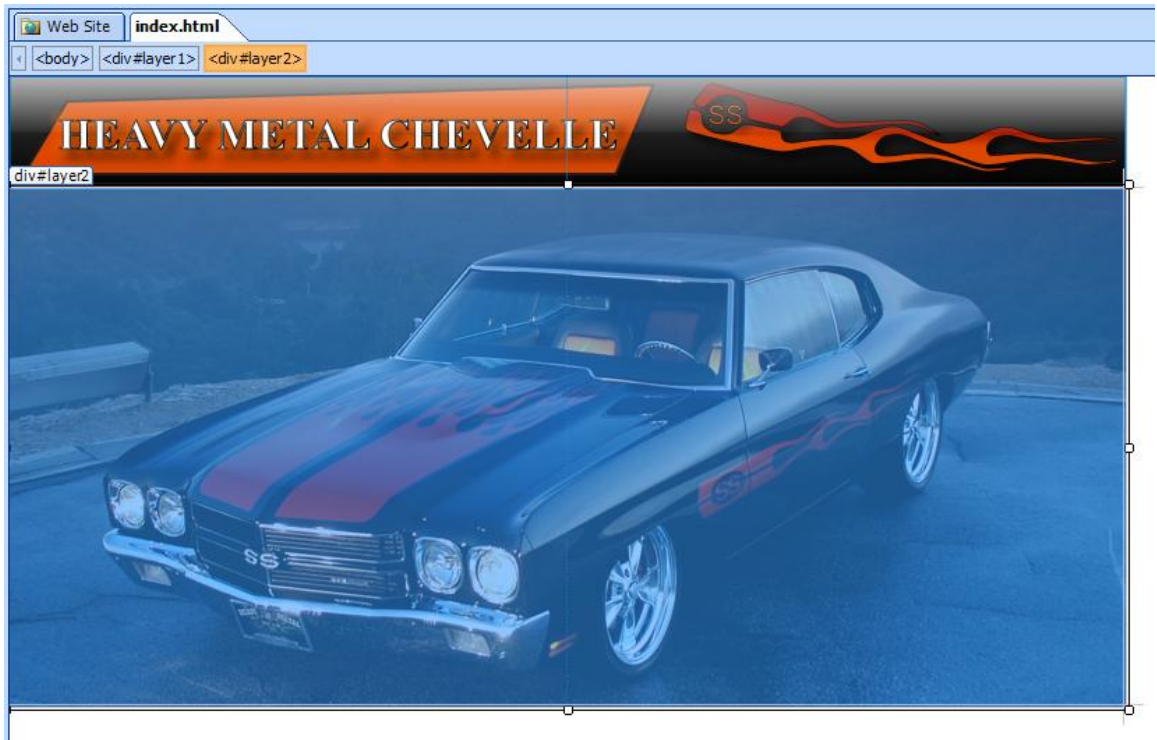
The layer should be highlighted in blue on the workspace.



9. With the layer highlighted, click the **CSS Properties** tab and specify the values in the following table. This will make your layer fit the header image perfectly.

Property	Value
height	372px
width	800px
left	0px
top	80px





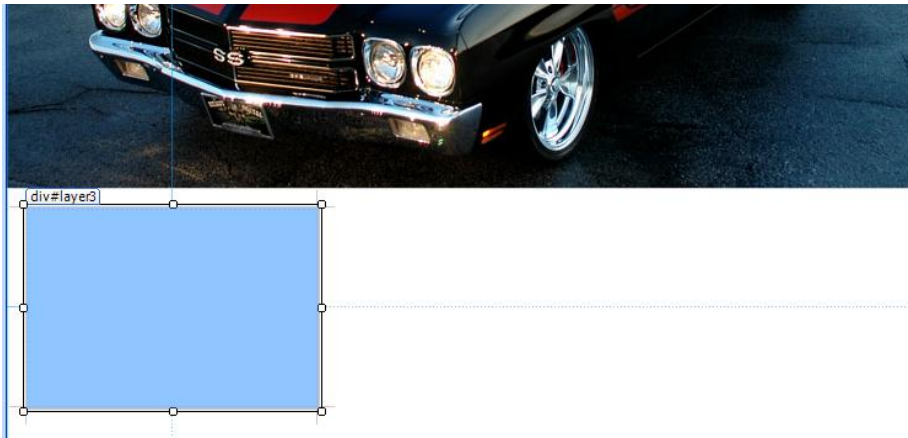
10. On the **File** menu, click **Save**.

**Task 3 is complete.**

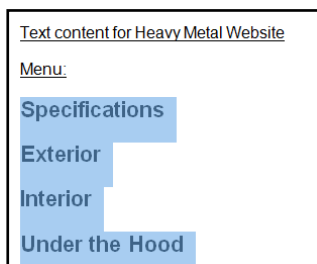
#### Task 4: Add text to a layer

You will add two more layers to house the Web site's navigation links and the homepage text content.

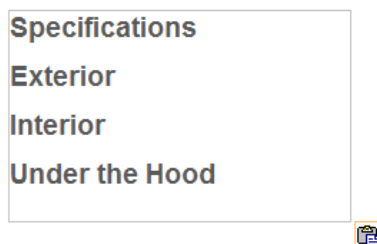
1. In the **Toolbox**, click **Layer** and drag it onto the page.
2. Position the layer below the left side of the hero image.
3. Drag the bottom-right handle and drag to make it a bit bigger. Use the following screenshot as a guide.



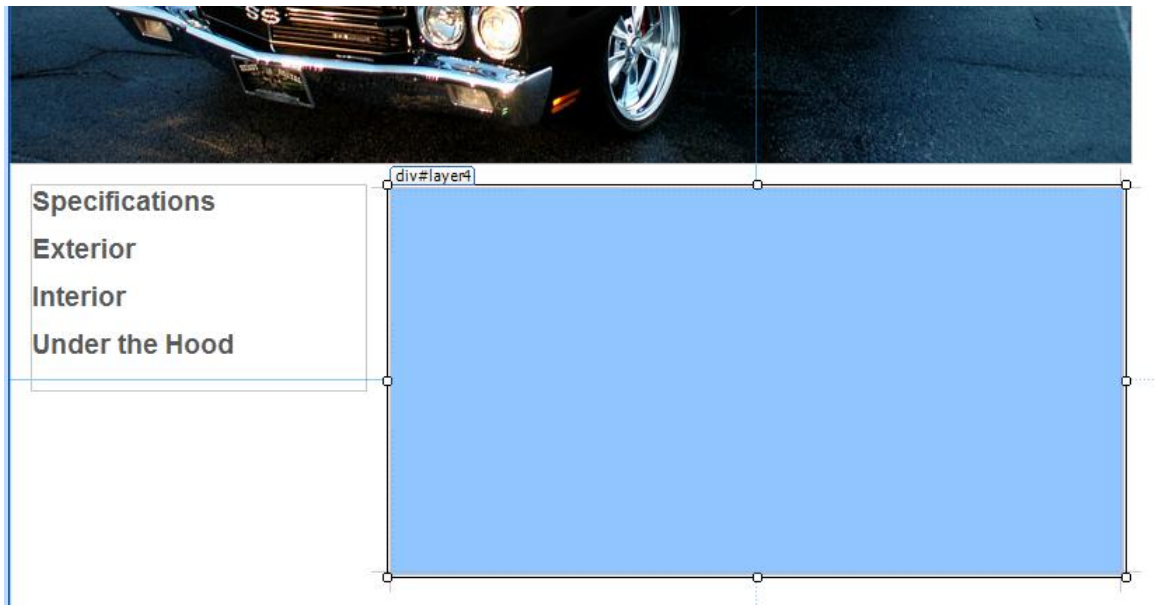
4. Minimize Expression Web and navigate to the **Heavy Metal Resources** folder using Windows Explorer.
5. Open the Word file named **Text content for Heavy Metal Web site**.
6. Drag to highlight the four lines of text under the word **Menu** from the Word document. Right click on the highlighted area and select **copy**.



7. Maximize Expression Web and click inside **layer 3** (the layer you just created) to place your cursor in it.
8. Paste the text into this layer by right clicking and choosing **Paste**.



9. Add another layer to the page using the **Toolbox**.
10. Position the layer next to **layer 3** and make it wider. Use the following screenshot as a guide.



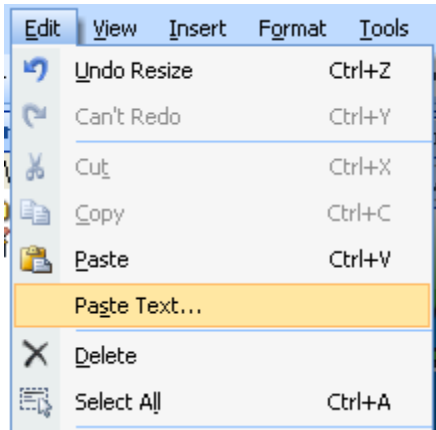
11. Minimize Expression Web and maximize the Word file named **Text content Text content for Heavy Metal Web site**.
12. Copy the paragraphs labeled **Page 1 text** and switch back to Expression Web.

Page 1 text:

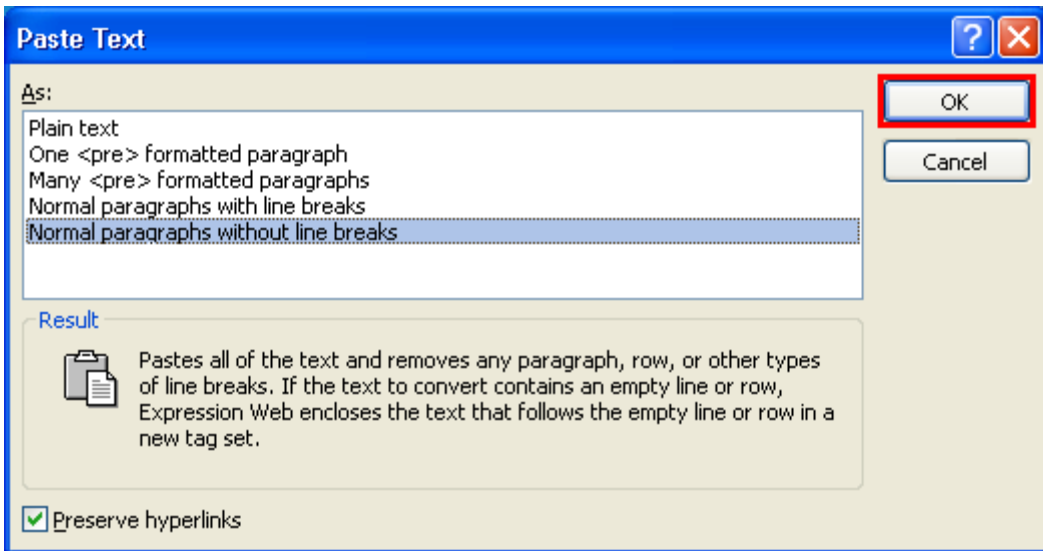
Dr. Richard Tapia is a famous mathematician and professor at Rice University in Houston, Texas, but he has a love of cars that goes back to his youth when he and his brother, Bobby, used to build cars and drag race in Los Angeles, California. Richard went on to pursue a career in mathematics. Bobby became a computer scientist, but continued racing and set world speed records. He was inducted into the NHRA (National Hot Rod Association) Hall of Fame in 2002 as one of the top dragster drivers of all time.

Richard and his wife Jean combined their love of cars to create a beautiful show car, this 1970 Chevelle called Heavy Metal. Heavy Metal represents the 1970 era of muscle cars, heavy metal music, and social unrest in the country. When the Tapia's show the car it is accompanied by a sound track of loud heavy metal music, and takes the spectator back to the time period of 1970. In its first show, The Pomona, Californian Super Chevy Show, Heavy Metal took Best of Show out of 700 entries.

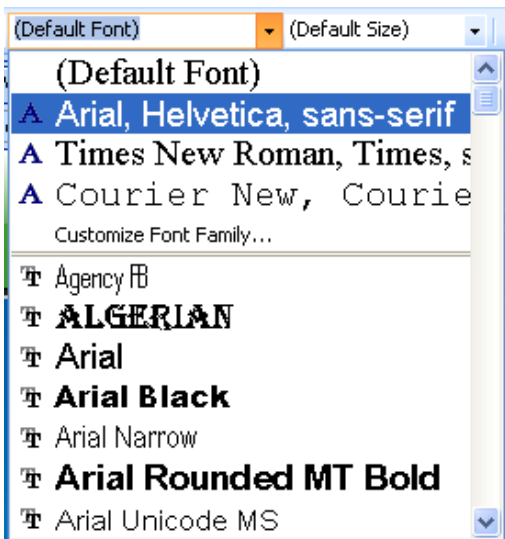
13. Click to place your cursor in **layer 4**.
14. On the **Edit** menu, click **Paste Text**.



15. In the **Paste Text** dialog, select **Normal paragraphs without line breaks** and click **OK**.



16. Highlight the text that you just pasted and select **Arial, Helvetica, sans-serif** from the font dropdown. Resize the layer again if necessary to fit the text.





17. Click in the top left corner of **layer 4** and move the cursor to the top left using the arrows on your keyboard.
18. Press the **Return/Enter** key on your keyboard.
19. Press the **Up Arrow** key on your keyboard to place the cursor on the top line of the layer.

`p.style1`

Dr. Richard Tapia is a famous mathematician and professor at Rice University in Houston, Texas, but he has a love of cars that goes back to his youth when he and his brother, Bobby, used to build cars and drag race in Los Angeles, California. Richard went on to pursue a career in mathematics. Bobby became a computer scientist, but continued racing and set world speed records. He was inducted into the NHRA (National Hot Rod Association) Hall of Fame in 2002 as one of the top dragster drivers of all time.

Richard and his wife Jean combined their love of cars to create a beautiful show car, this 1970 Chevelle called Heavy Metal. Heavy Metal represents the 1970 era of muscle cars, heavy metal music, and social unrest in the

20. Type **The Beginning**.

<body>

HEAVY METAL CHEVELLE



<p><b>Specifications</b></p> <p>Exterior</p> <p>Interior</p> <p>Under the Hood</p>	<p>The Beginning</p> <p>Dr. Richard Tapia is a famous mathematician and professor at Rice University in Houston, Texas, but he has a love of cars that goes back to his youth when he and his brother, Bobby, used to build cars and drag race in Los Angeles, California. Richard went on to pursue a career in mathematics. Bobby became a computer scientist, but continued racing</p>
--	---

On the **File** menu, click **Save**.

**Task 4 is complete.**

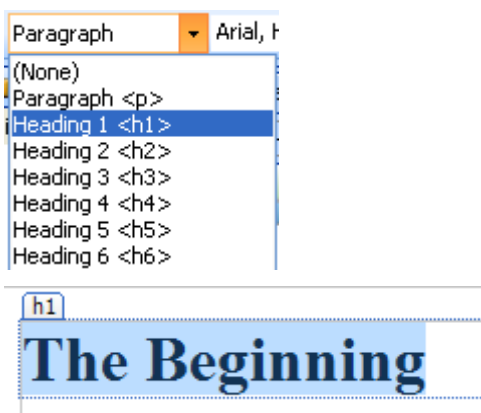
## Exercise 3: Styling Your Web site Using CSS

**Scenario:** You will use CSS to format headline styles, position layers, and align images. At the end of the exercise you will preview the page in a Web browser.

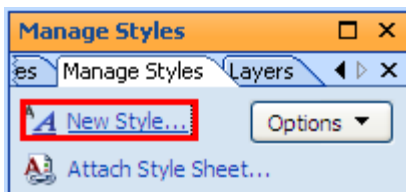
### Task 1: Format the headline style

You will format the h1 headline style using CSS.

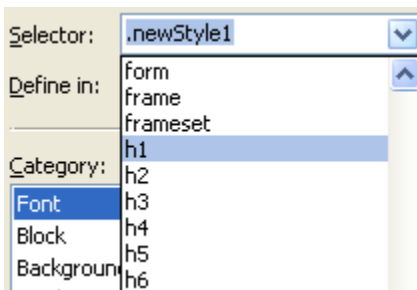
1. Click and drag to select **The Beginning** headline text.
2. Select **Heading 1 <h1>** from the **Style** dropdown menu. The text should automatically resize and become bold.



3. In the lower right corner locate the **Apply Styles** or **Manage Styles** task panes.
4. Click **New Style**.



5. In the **New Style** dialog, Scroll down to locate the **Selector** dropdown menu and then select **h1**.



- With the **Font** category open, specify the values from the following table.

Property	Value
font-family	Arial, Helvetica, sans-serif Note: This can be selected from the dropdown menu
font-size	16px

Category:

- Font
- Block
- Background

font-family: Arial, Helvetica, sans-serif

font-size: 16 px

text-decoration:

- Click **OK** to save the style. Your header should automatically change to reflect the new header.

The screenshot shows a web browser window with a blue header bar containing the text '<body> <div#layer4> <h1>'. Below the header is a large image of a black and red Chevrolet Chevelle SS. The page content includes a sidebar with 'Specifications' (Exterior, Interior, Under the Hood) and a main text area titled 'The Beginning' which starts with 'Dr. Richard Tapia is a famous mathematician and professor at Rice University...'.

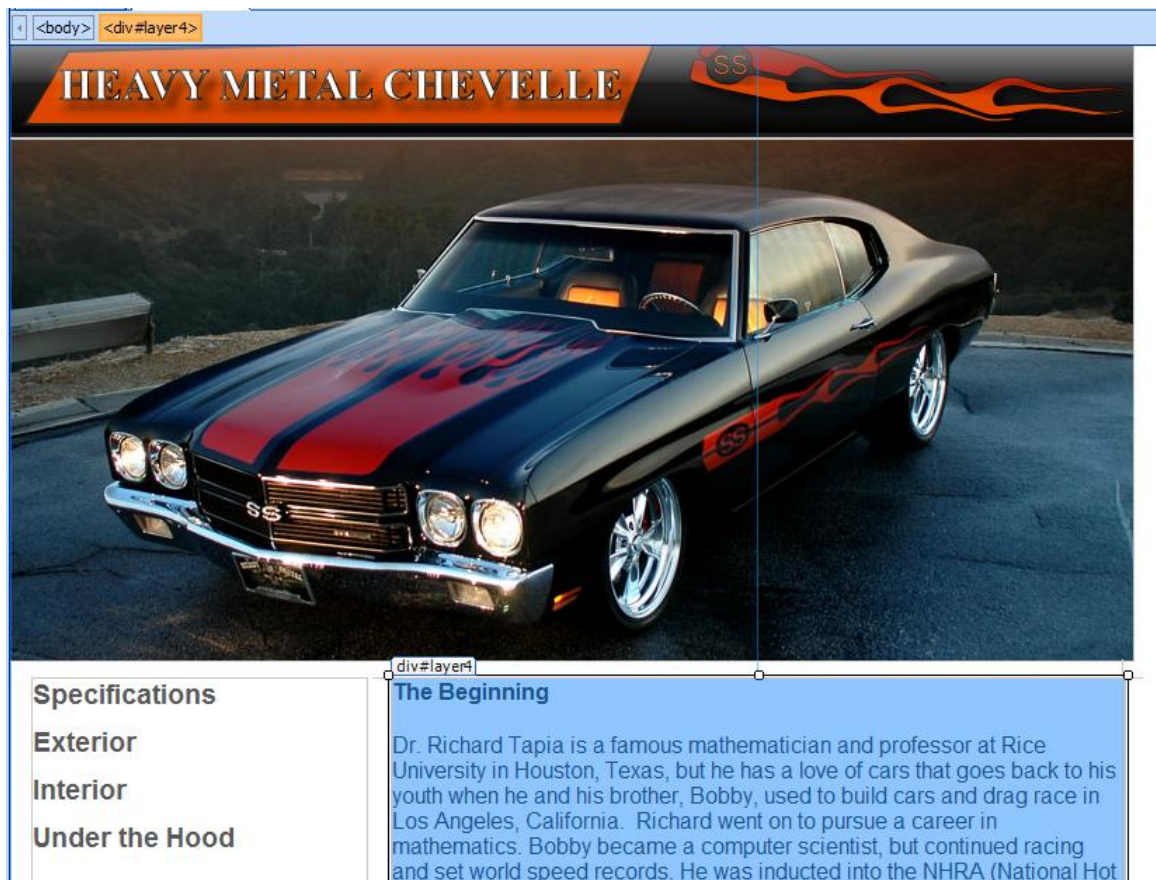
- On the **File** menu, click **Save**.

Task 1 is complete.

## Task 2: Position layers using CSS

You will position layers 3 & 4 using the CSS properties task pane so they are aligned on the vertical axis.

1. Locate the **Layers** task pane in the lower right corner. Select **layer 3**
2. With the layer highlighted, click the **CSS Properties** tab (lower left).
3. Scroll down to find the **Top** field within the position category and enter **465px**.
4. Select **layer 4** and repeat step 2. This will align the top of both layers.
5. On the **File** menu, click **Save**.



Task 2 is complete.



### Task 3: Use CSS to align an image

You will add an image to layer 4 and align it by creating a CSS style.

1. Click to place your cursor at the beginning of the first paragraph in **layer 4**, just before the words “Dr. Richard Tapia is a...”

**The Beginning**

p.style1


Dr. Richard Tapia is a famous mathematician and professor at Rice University in Houston, Texas, but he has a love of cars that goes back to his youth when he and his brother, Bobby, used to build cars and drag race in Los Angeles, California. Richard went on to pursue a career in mathematics. Bobby became a computer scientist, but continued racing and set world speed records. He was inducted into the NHRA (National Hot

2. On the **insert** menu, point to **Picture** and click **From File**.
3. Select the image called **wheel.jpg** and click **Insert**.
4. In the **Accessibility Properties** dialog, specify the values from the following table and click **OK**.

Property	Value
Alternate text	Heavy Metal wheel
Long description	Front wheel on the Heavy Metal car

**The Beginning**

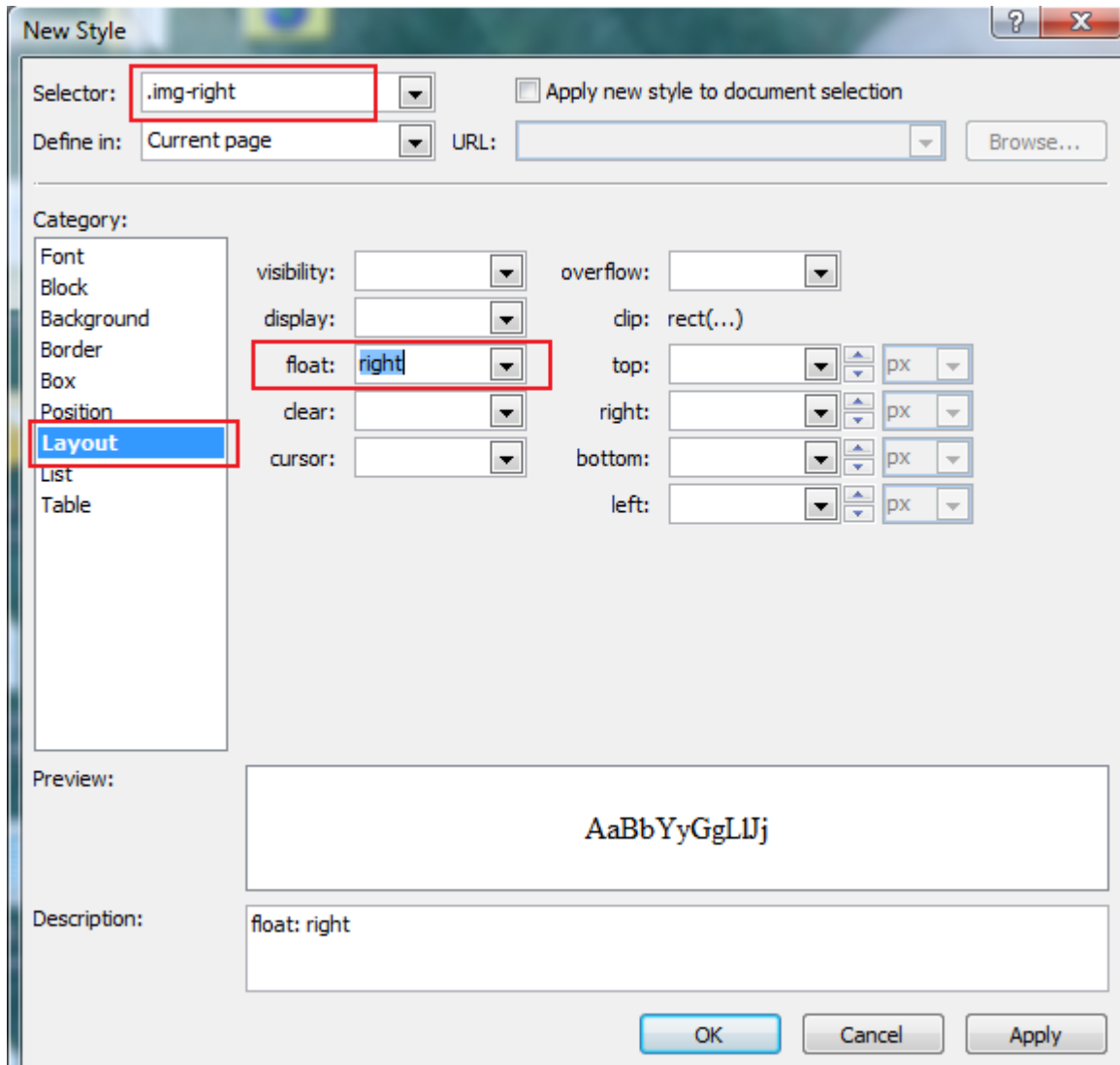
p.style1



Dr. Richard Tapia is a famous mathematician and professor at Rice University in Houston, Texas, but he has a love of cars that goes back to his youth when he and his brother, Bobby, used to build cars and drag race in Los Angeles, California. Richard went on to pursue a career in mathematics. Bobby became a computer scientist, but continued racing and set world speed records. He was inducted into the NHRA (National Hot Rod Association) Hall of Fame in 2002 as one of the top dragster drivers of all time.

Richard and his wife Jean combined their love of cars to create a beautiful show car, this 1970 Chevelle called Heavy Metal. Heavy Metal represents the 1970 era of muscle cars, heavy metal music, and social unrest in the

5. Click **New Style** in the **Apply Styles** or **Manage Styles** task panes (lower right corner.)
6. In the **New Style** dialog, enter **.img-right** in the **Selector** field.  
Note: All class styles must begin with a dot or period.
7. Select the **Layout** category and set **Float** to **Right**.

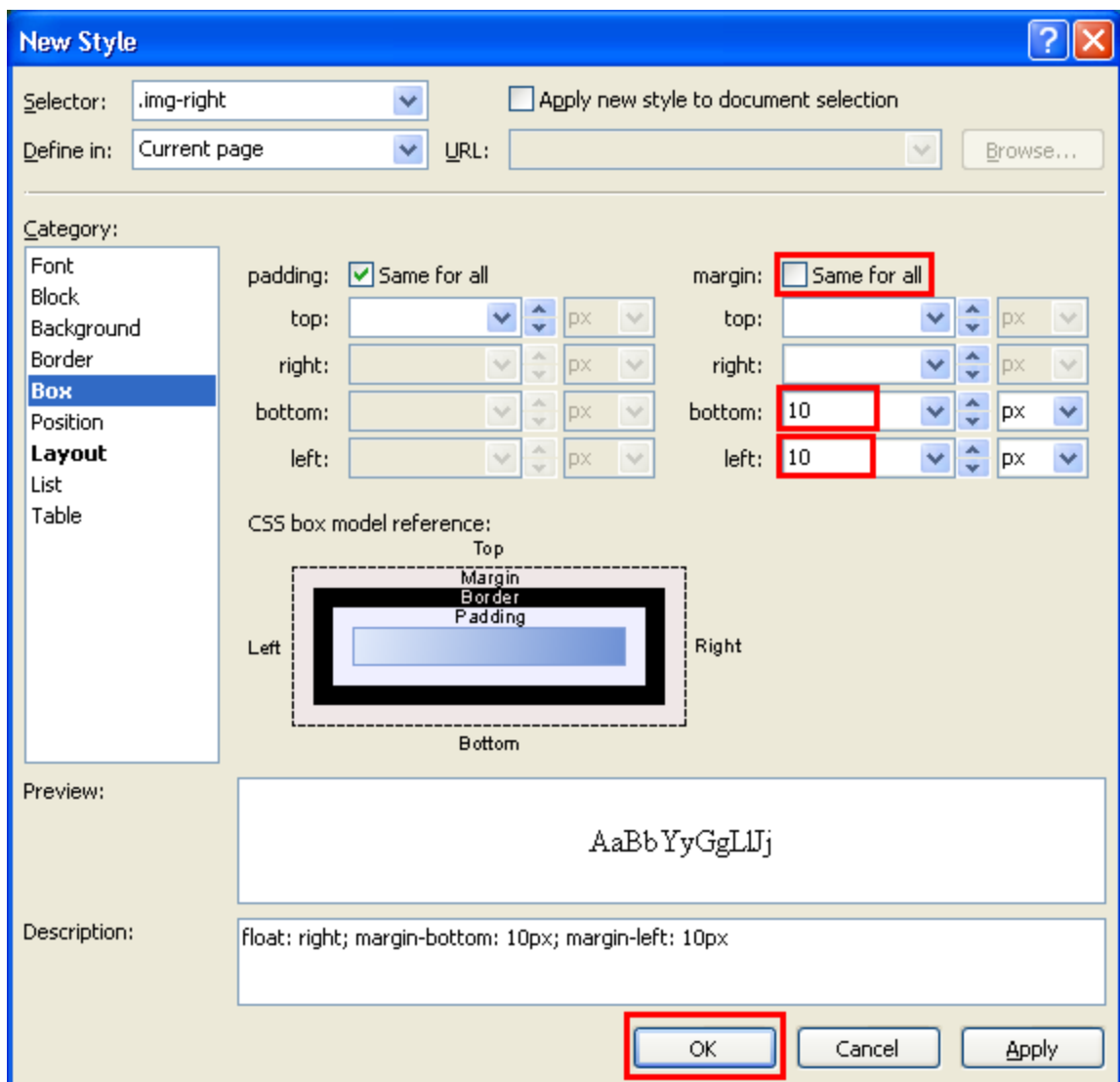




8. Select the **Box** category and specify the values from the following table.

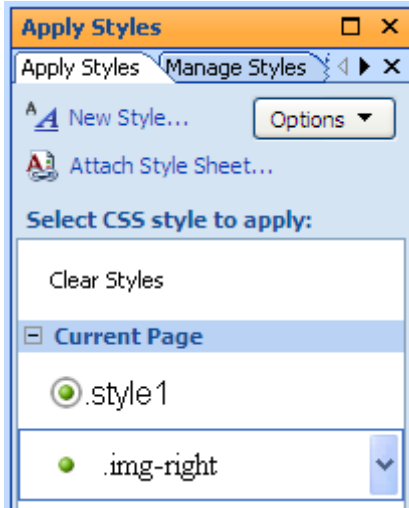
Property	Value
Margin: Same for all	Unchecked
Margin: bottom	10px
Margin: left	10px

9. Click **OK** to create the new style.



10. Click the small image of the wheel that you just inserted into **layer 4**.
11. In the **Apply Styles** task pane, click to select the **.img-right** style.

The image should align to the right and the text should wrap around to the left with 10 pixels of margin on the left and bottom of the image.



<body>
<div#layer4>
<p.style1>
<img.img-right>

**Specifications**

**Exterior**

**Interior**

**Under the Hood**

**The Beginning**

Dr. Richard Tapia is a famous mathematician and professor at Rice University in Houston, Texas, but he has a love of cars that goes back to his youth when he and his brother, Bobby, used to build cars and drag race in Los Angeles, California. Richard went on to pursue a career in mathematics. Bobby became a computer scientist, but continued racing and set world speed records. He was inducted into the NHRA (National Hot Rod Association) Hall of Fame in 2002 as one of the top dragster drivers of all time.

Richard and his wife Jean combined their love of cars to create a beautiful

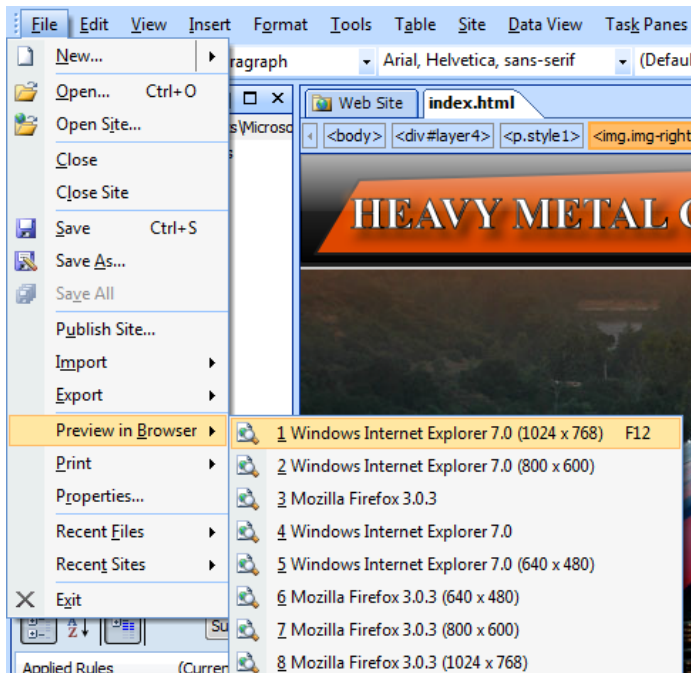
12. On the **File** menu, click **Save**.

**Task 3 is complete.**

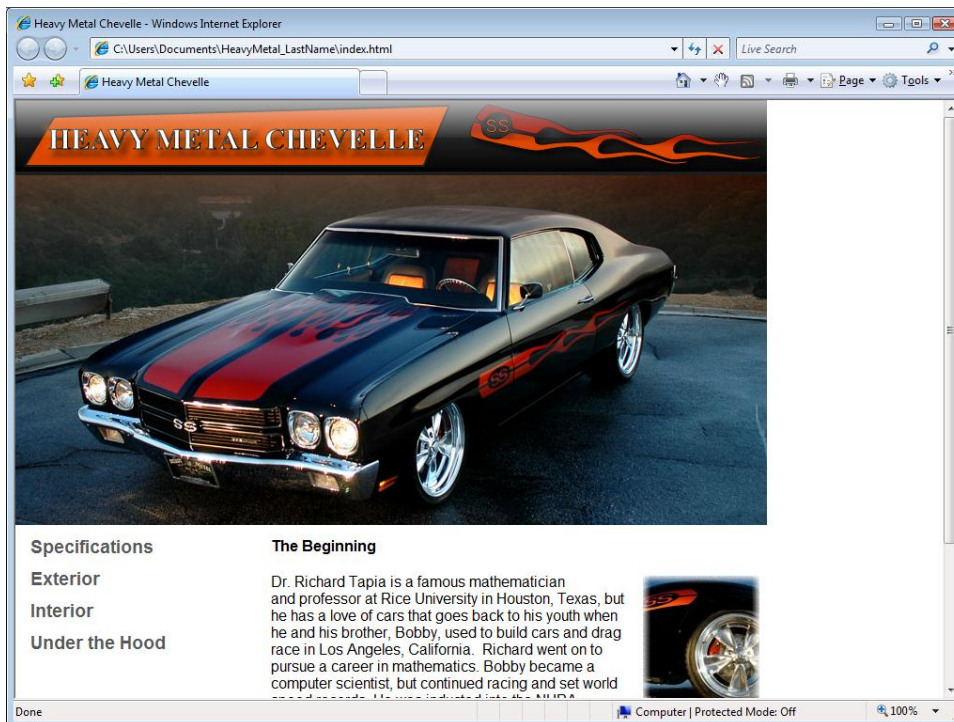
## Task 4: Preview the Page in a Browser


You will use a web browser to preview the page and see what it will look like to an end user.

1. On the **File** menu, click **Save**. You cannot preview an unsaved page.
2. On the **File** menu, point to **Preview in Browser** and click **Windows Internet Explorer 7.0 (1024 X 768)** (or whatever browser you have installed on your computer.)



3. Take a look at how your page looks and close the browser window.



 **Task 4 is complete.**

## Exercise 4: Creating More Pages

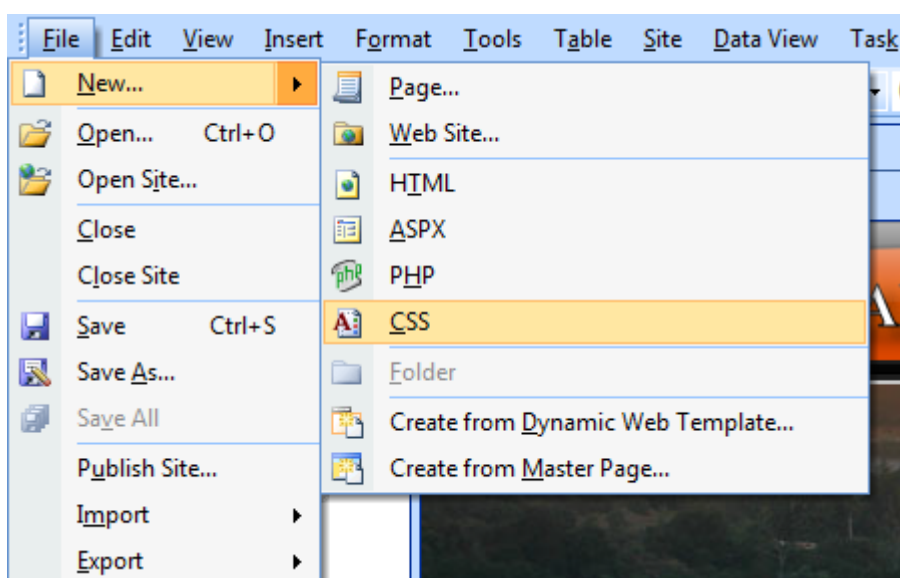
**Scenario:** You will create additional pages for your Web site using a Dynamic Web Template and will style those pages using an external Cascading Style Sheet (CSS) file.

### Task 1: Create an external style sheet

You will create an external style sheet so you can easily use the same styles across many pages.

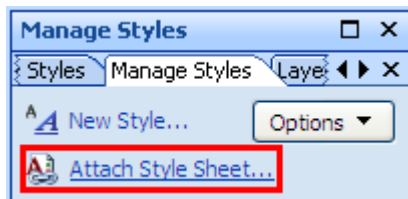
1. On the **File** menu, point to **New** and click **CSS**.

A blank page will open, but do not do anything to the page.

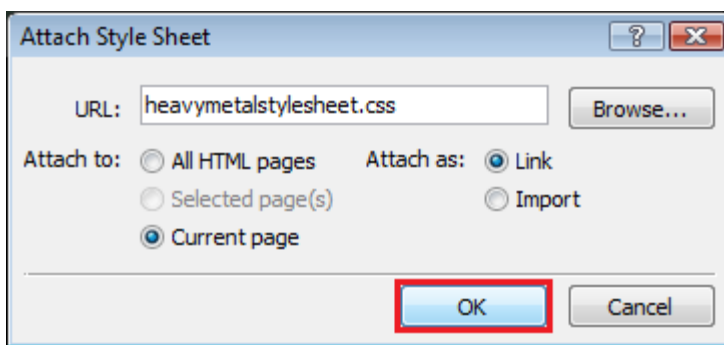


2. On the **File** menu, click **Save**.
3. In the **Save As** dialog, enter **heavymetalstylesheet.css** into the **File Name** field and click **Save**.
4. Click on the **index.html** tab to go back to your home page.

5. Click **Attach Style Sheet** in the **Apply Styles** or **Manage Styles** task panes (lower right corner.)

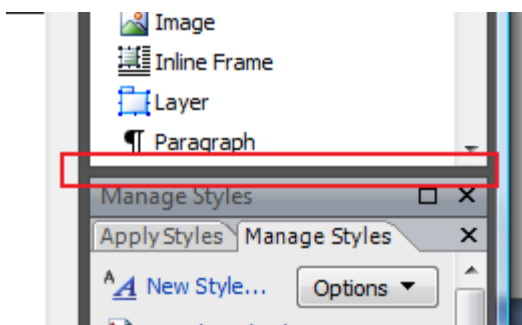


6. In the **Attach Style Sheet** dialog, click the **Browse** button.
7. In the **Select Style Sheet** dialog, select **heavymetalstylesheet.css** from your Web site folder and click **Open**. Navigate back to the main Web site folder if necessary.
8. In the **Attach Style Sheet** dialog, click **OK** to attach the style sheet.

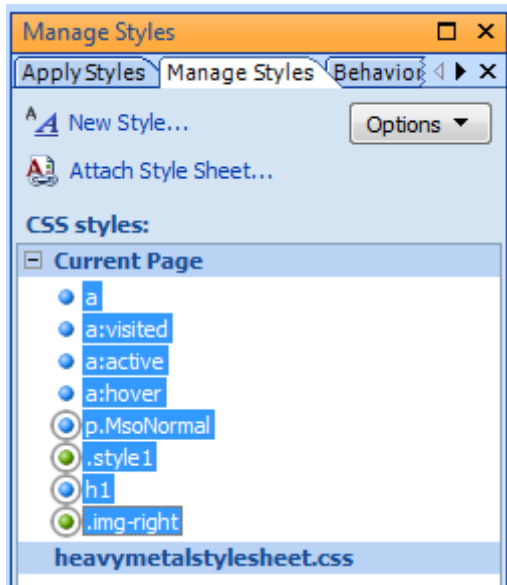


9. In the **Manage Styles** task pane, locate the words **heavymetalstylesheet.css**.

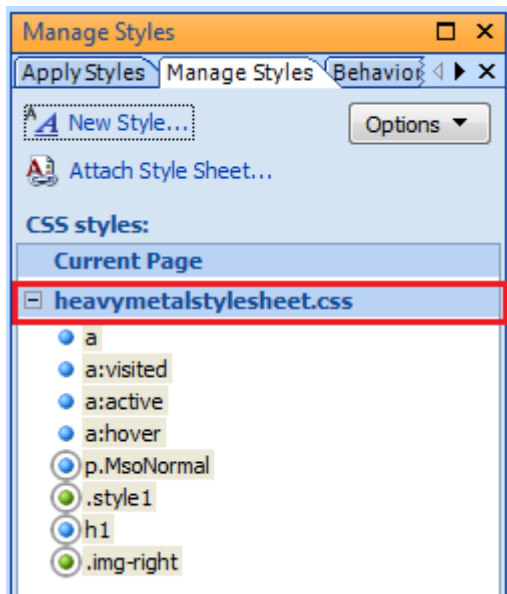
You may need to resize this task pane to be able to see the entire list shown below. You can do this by positioning the cursor on the heavy gray line between the tool box and the Manage Styles task panes, and then dragging this line up enough to see the complete styles list.



10. In the **Manage Styles** task pane, click on the first style (**a**) and then click the last style (**.img-right**) while holding **Shift** on your keyboard. This should highlight all the styles in the **Current Page** category.



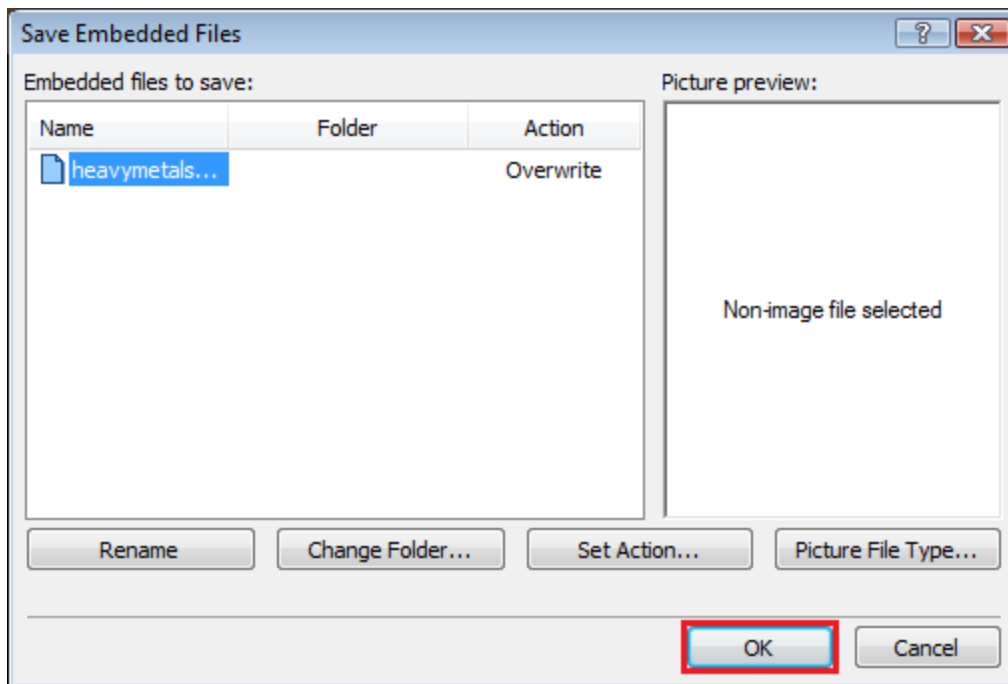
11. Drag all of the selected styles to the **heavymetalstylesheet.css** category.
12. This will move all of your styles from the homepage into the external style sheet.



13. On the **File** menu, click **Save**.



14. In the **Save Embedded Files** dialog, click **OK**.

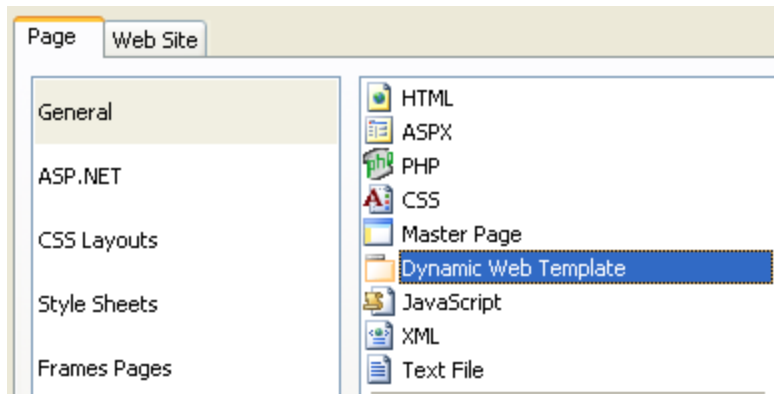


□ Task 1 is complete.

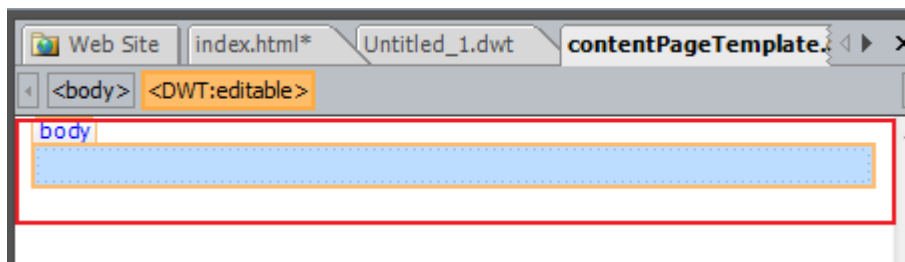
## Task 2: Create a Dynamic Web Template

You will create a Dynamic Web Template so you can use the same layout across many pages.

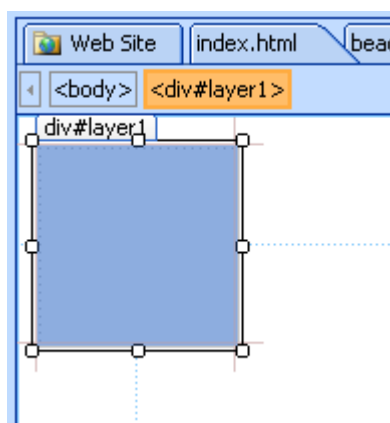
1. On the **File** menu, point to **New** and click **Page**.
2. In the **New** dialog box, click **General**, then click **Dynamic Web Template** and click **OK**.



3. On the **File** menu, click **Save As**.
4. In the **Save As** dialog, enter **contentPageTemplate** in the **File Name** field and click **Save**.  
A filename extension, **.dwt**, will be created automatically when you save the file.
5. Click on the layer that is already on the page and press **Delete**.



6. In the **Toolbox**, click **Layer** and drag it onto the page.
7. Click on the layer to highlight it.



8. With the layer highlighted, click the **CSS Properties** tab and specify the values in the following table.

Property	Value
height	80px
width	800px
left	0px
top	0px

9. Click inside the new layer to place the cursor within the layer.
10. On the **Insert** menu, point to **Picture** and click **From File**.
11. In the **Picture** dialog box, navigate to the **Heavy Metal Resources** folder in your Web site and select **HeavyMetalHeader.png**.
12. Click **Insert** to add the picture to your site.
13. In the **Accessibility Properties** dialog, specify the values from the following table and click **OK**. This will help users with limited vision and search engines identify the image.

Property	Value
Alternate text	Heavy Metal Chevelle header
Long description	Heavy Metal Chevelle text with flames on the right

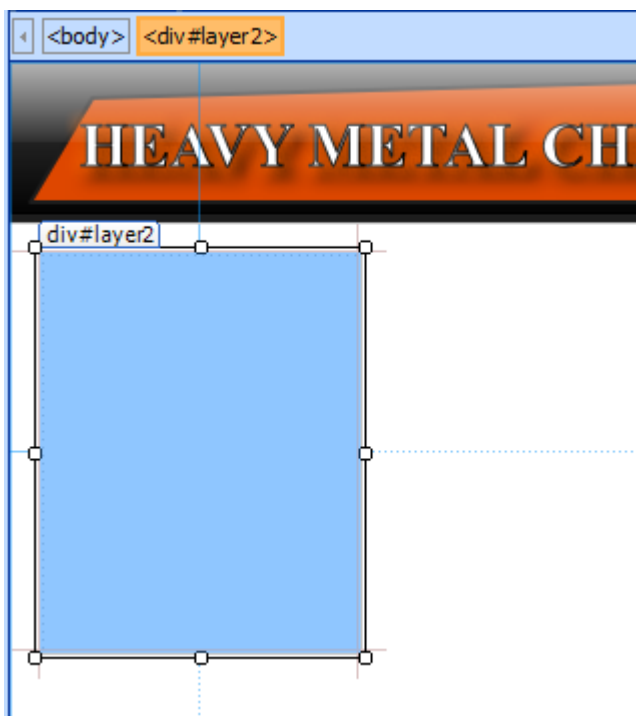
14. Create a second layer by double click **Layer** in the **Toolbox**. You should now have two layers on the page.

15. Click on **layer 2** to highlight it.



16. With the layer highlighted, click the **CSS Properties** tab and specify the values in the following table.

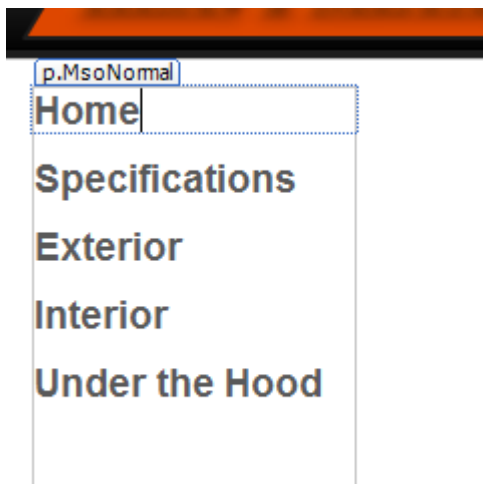
Property	Value
height	200px
width	160px
left	15px
top	95px



17. Navigate to your homepage (**index.html**) using the **Folder List** or the page tabs.
18. Drag to select the four lines of text in **layer 3**. Right click to **copy** the text.



19. Navigate back to your Dynamic Web Template (**contentPageTemplate.dwt**)
20. **Click inside** of **layer 2** to position the insertion cursor within the layer.
21. **Right click** and choose **paste**.
22. Position the cursor before the letter 'S' in the word Specifications at the top of this list.
23. Press **return**.
24. Type the word **Home** on a new line at the top of the layer.

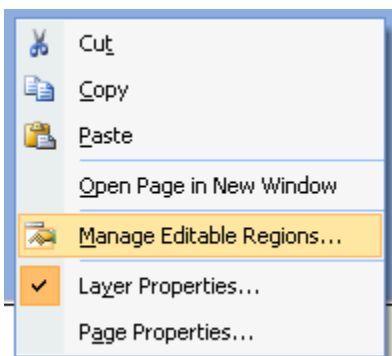


25. Add another layer to the Dynamic Web Template using the **Toolbox**.
26. With the layer highlighted, click the **CSS Properties** tab and specify the values in the following table.

Property	Value
height	250px
width	590px
left	200px
top	95px

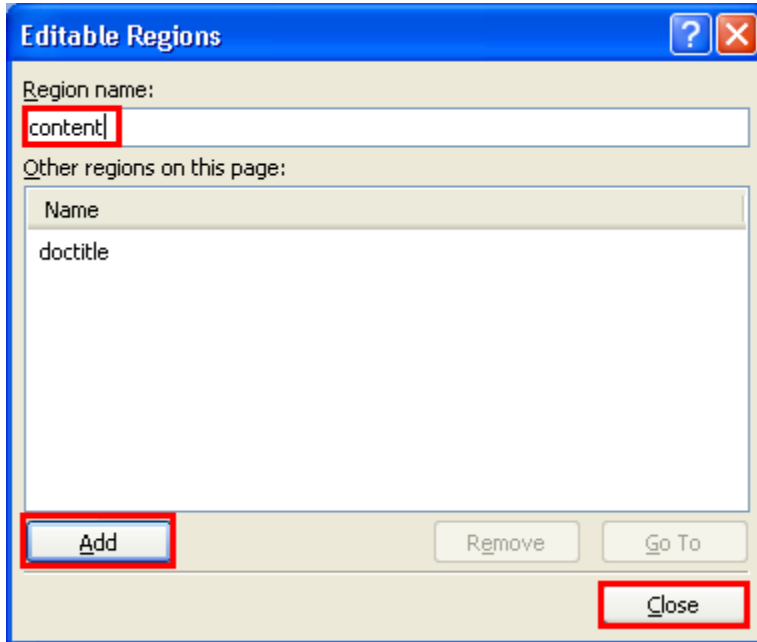


27. Right-click the new layer (**layer 3**) and select **Manage Editable Regions**.



28. In the **Editable Regions** dialog box, enter **content** into the **Region name** field, click **Add**, and then click **Close**.

This will allow you to edit this layer on pages that you create using the Dynamic Web Template.



29. On the **File** menu, click **Save**.



Task 2 is complete.



### Task 3: Attach a style sheet to the Dynamic Web Template

You will attach an external style sheet to the Dynamic Web Template that you just created. This will allow all your pages to have the same styles.

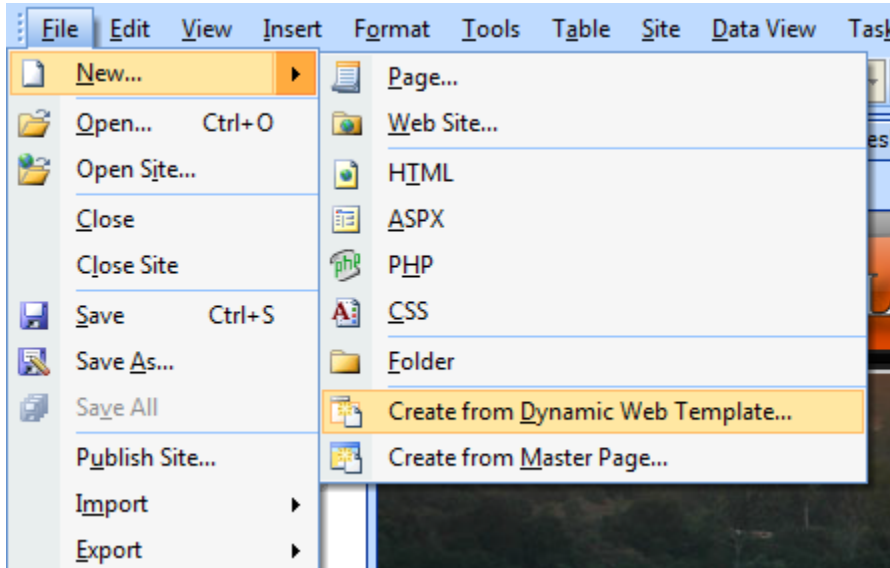
1. Open the Dynamic Web Template (**contentPageTemplate.dwt**) from the tabs at the top of the work area or from the **Folder List**.
2. Click **Attach Style Sheet** in the **Apply Styles** or **Manage Styles** task panes (lower right corner.)
3. In the **Attach Style Sheet** dialog box, click the **Browse** button.
4. Navigate to the main folder of your Web site files where the .css file was saved.
5. In the **Select Style Sheet** dialog box, select **heavymetalstylesheet.css** from your Web site folder and click **Open**.
6. In the **Attach Style Sheet** dialog box, click **OK** to attach the style sheet.
7. On the **File** menu, click **Save**.

**Task 3 is complete.**

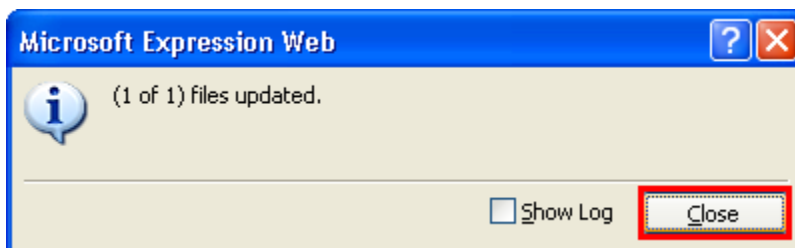
## Task 4: Create internal pages using the Dynamic Web Template

You will create your four internal pages using the Dynamic Web Template that you just created.

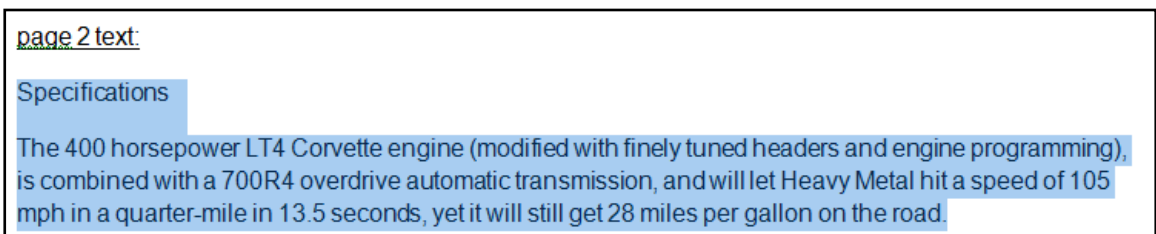
1. On the **File** menu, point to **New** and click **Create from Dynamic Web Template**.



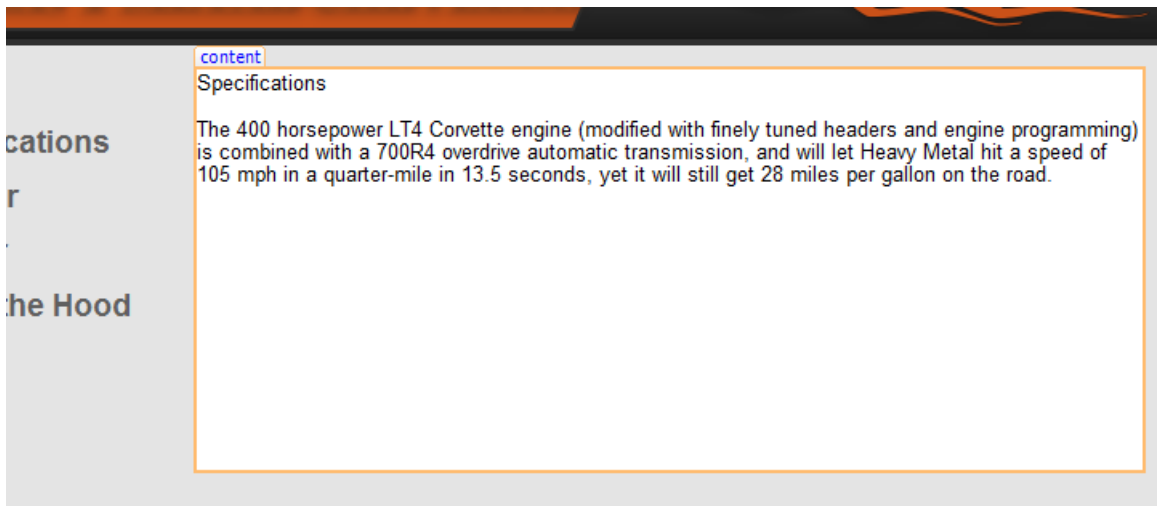
2. In the **Attach Dynamic Web Template** dialog box, select **contentPageTemplate.dwt** from your Web site folder and click **Open**.
3. Click **Close** on the **Microsoft Expression Web** dialog box.



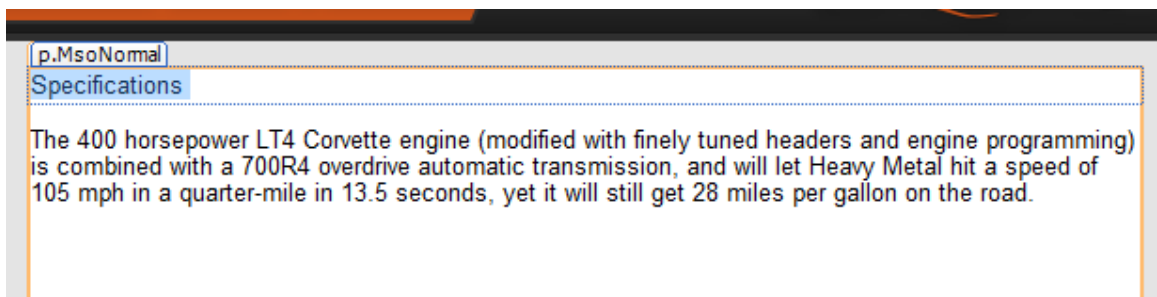
4. Open the Word file named **Text content for Heavy Metal Web site** from your resources folder.
5. Copy the text below the section labeled **page 2 text**.



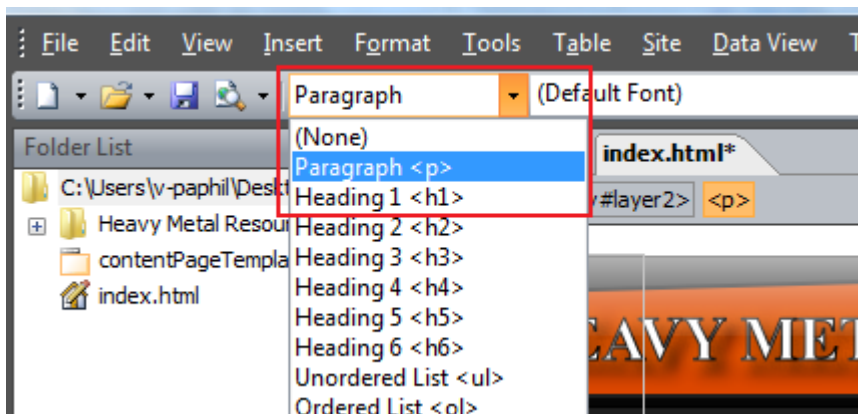
6. Navigate back to Expression Web and click inside **layer 3** on the new page to make the cursor appear.
7. Paste the text.



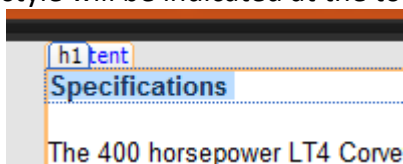
8. Highlight **Specifications** on the top line.



9. Select **Heading 1 <h1>** from the pull-down choices in the **Common Toolbar** at top.

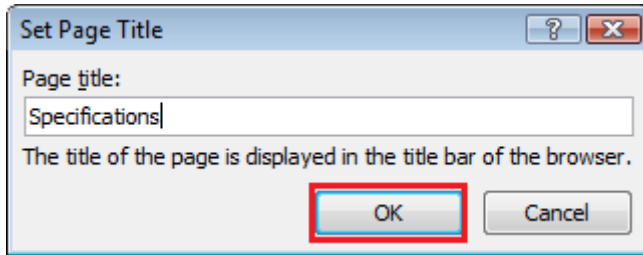


The h1 style will be indicated at the top of the text layer.

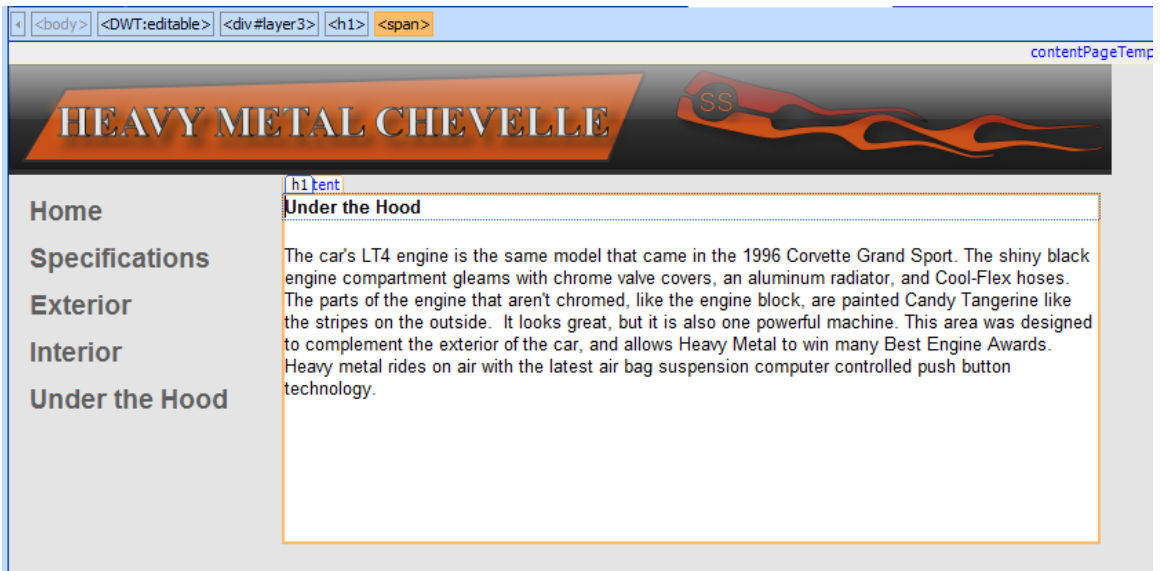


10. On the **File** menu, click **Save**.

11. In the lower right corner of the **Save As** dialog box, click **Change title**.
12. In the **Set Page Title** dialog box, enter **Specifications** and click **OK**.



13. In the **Save As** dialog box, enter **specifications** into the **File name** field and click **Save**.
14. Repeat steps 1 to 13 three more times to create a page on the exterior, interior, and under the hood. Use the appropriate text from the **Text content for Heavy Metal Web site** Word document.
15. **Save** each page with the following names: **exterior**, **interior**, and **under\_the\_hood**.



Task 4 is complete.

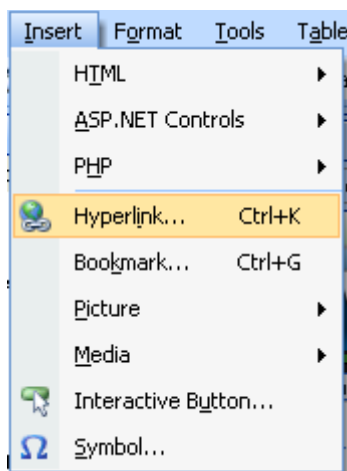
## Exercise 5: Adding Navigation Controls to your Site

**Scenario:** You will add navigation to your Web site using links and interactive buttons.

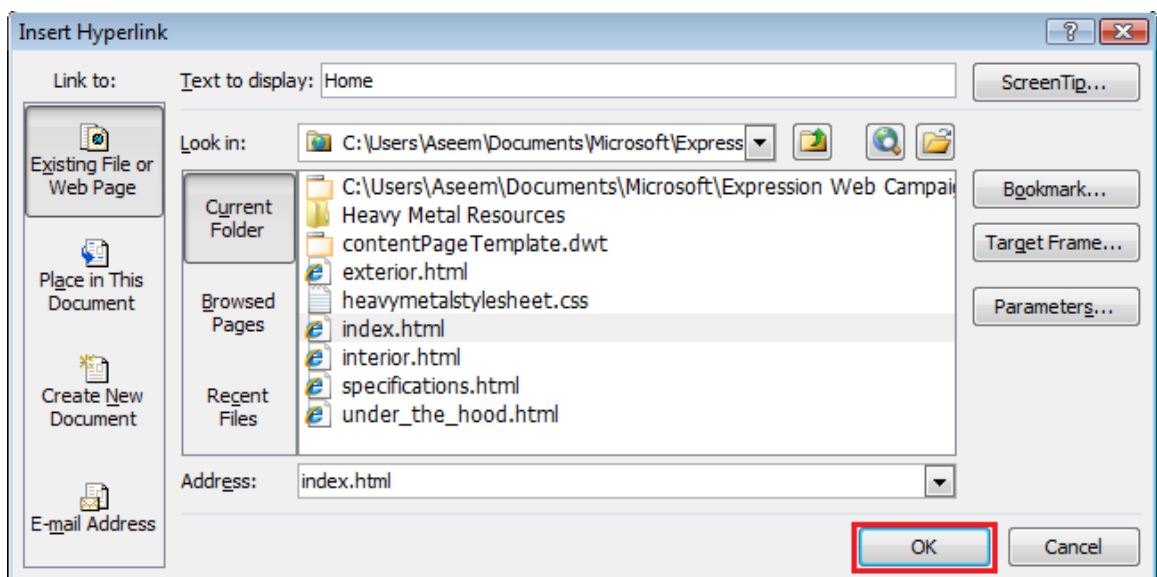
### Task 1: Create internal links

You will make the internal links functional so users can navigate your Web site.

1. Open the Dynamic Web Template (**contentPageTemplate.dwt**) from the tabs at the top of the work area or from the **Folder List**.
2. Highlight **Home** on the top line of **layer 2**.
3. On the **Insert** menu, click **Hyperlink**.

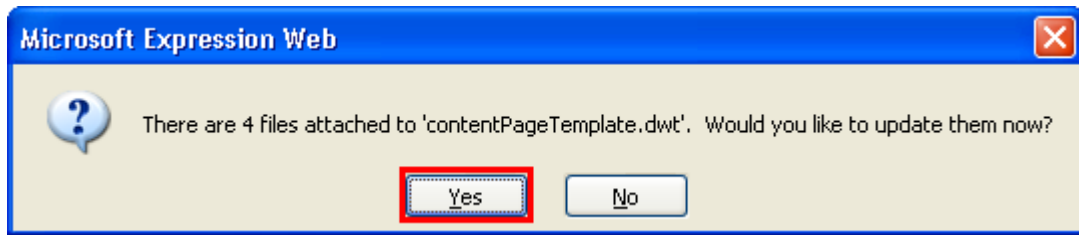


4. In the **Insert Hyperlink** dialog box, scroll the list of file names, select **index.html** and click **OK**.



5. Repeat steps 2 to 4 for the remaining words in the menu: Specifications, Exterior, Interior, and Under the Hood.

6. On the **File** menu, click **Save**.
7. In the **Microsoft Expression Web** dialog box, click **Yes**.



8. In the next dialog box, click **Close**.
9. Compare your screen with the example below.



10. Save your work.

**Task 1 is complete.**

## Task 2: Create an external link

You will create a link to another Web site on your homepage.

1. Locate the home page (**index.html**) tab at the top of the work area. You may need to use the arrows on the right or left side of the tabs to view hidden tabs.
2. Open the homepage (**index.html**) from the tabs at the top of the work area or from the **Folder List**.
3. Make this layer slightly larger than the text it holds. Place your cursor at the end of the last paragraph in **layer 4** and press **Enter**.
4. Type in the words **See pictures and video of Richard's Heavy Metal**.
5. Highlight that line.

### The Beginning

Dr. Richard Tapia is a famous mathematician and professor at Rice University in Houston, Texas, but he has a love of cars that goes back to his youth when he and his brother, Bobby, used to build cars and drag race in Los Angeles, California. Richard went on to pursue a career in mathematics. Bobby became a computer scientist, but continued racing and set world speed records. He was inducted into the NHRA (National Hot Rod Association) Hall of Fame in 2002 as one of the top dragster drivers of all time.



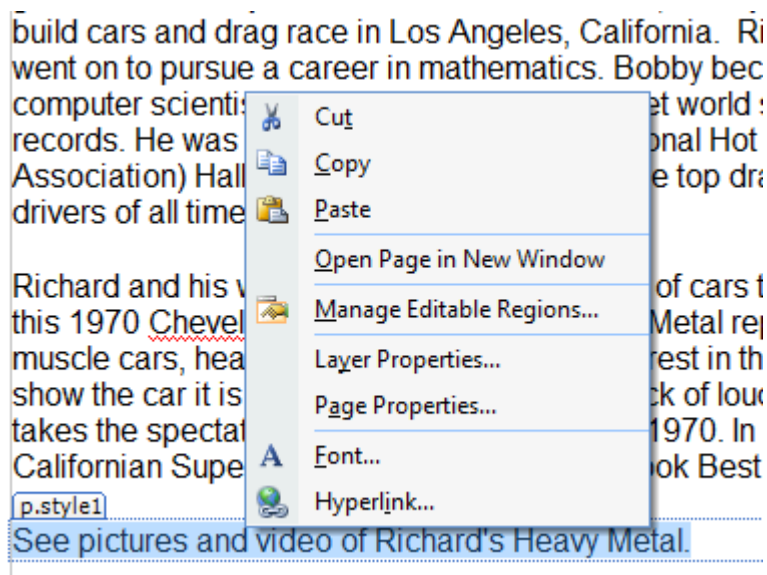
Richard and his wife Jean combined their love of cars to create a beautiful show car, this 1970 Chevelle called Heavy Metal. Heavy Metal represents the 1970 era of muscle cars, heavy metal music, and social unrest in the country. When the Tapia's show the car it is accompanied by a sound track of loud heavy metal music, and takes the spectator back to the time period of 1970. In its first show, The Pomona, Californian Super Chevy Show, Heavy Metal took Best of Show out of 700 entries.

`p.style1`

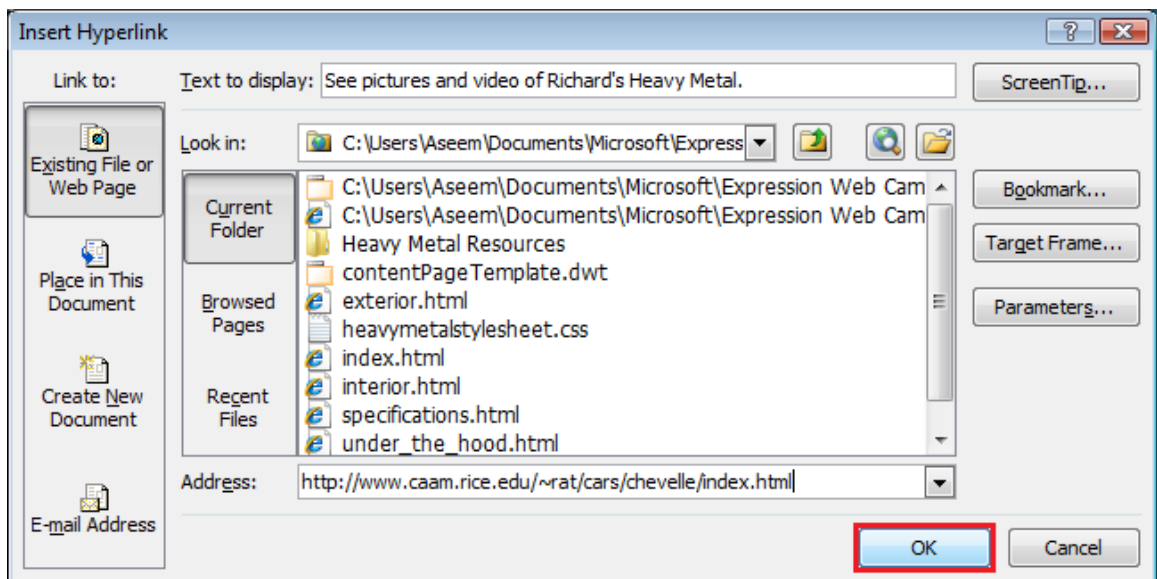
[See pictures and video of Richard's Heavy Metal.](#)



6. Right-click the highlighted text and click **Hyperlink**.



7. Enter <http://www.caam.rice.edu/~rat/cars/chevelle/index.html> in the **Address** field and click **OK**.



8. On the **File** menu, click **Save**.
9. Compare your page with the image below.



- Specifications
- Exterior
- Interior
- Under the Hood

### The Beginning

Dr. Richard Tapia is a famous mathematician and professor at Rice University in Houston, Texas, but he has a love of cars that goes back to his youth when he and his brother, Bobby, used to build cars and drag race in Los Angeles, California. Richard went on to pursue a career in mathematics. Bobby became a computer scientist, but continued racing and set world speed records. He was inducted into the NHRA (National Hot Rod Association) Hall of Fame in 2002 as one of the top dragster drivers of all time.



Richard and his wife Jean combined their love of cars to create a beautiful show car, this 1970 Chevelle called Heavy Metal. Heavy Metal represents the 1970 era of muscle cars, heavy metal music, and social unrest in the country. When the Tapia's show the car it is accompanied by a sound track of loud heavy metal music, and takes the spectator back to the time period of 1970. In its first show, The Pomona, Californian Super Chevy Show, Heavy Metal took Best of Show out of 700 entries.

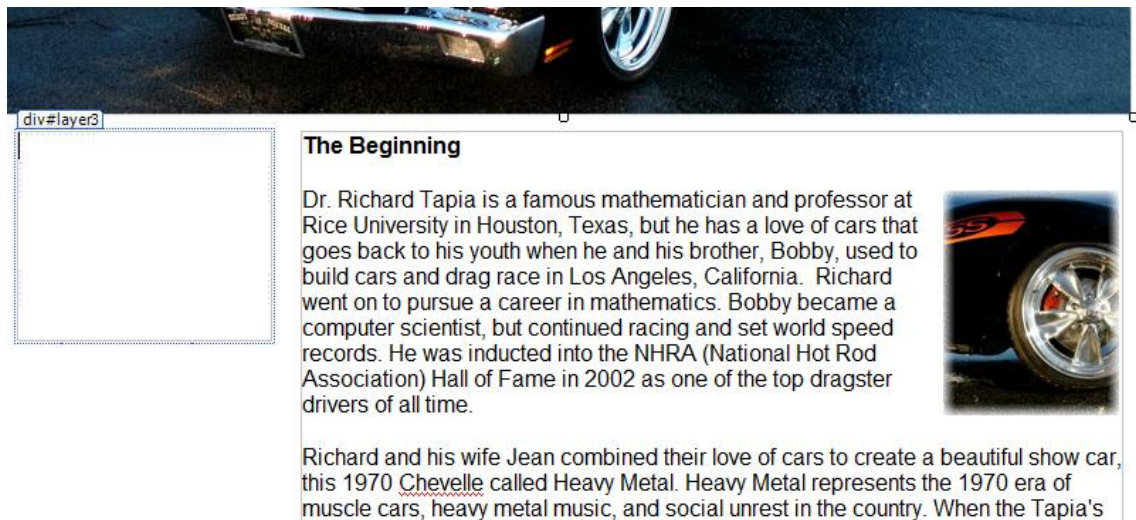
[See pictures and video of Richard's Heavy Metal.](#)

Task 2 is complete.

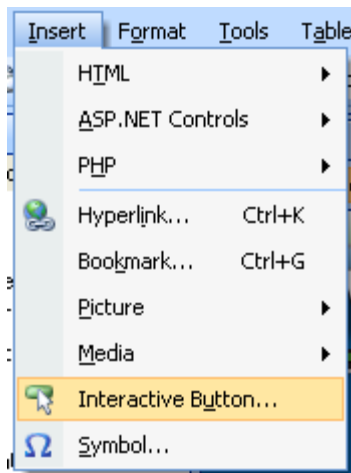
### Task 3: Create interactive buttons

You will create interactive buttons on your homepage to make the navigation more appealing.

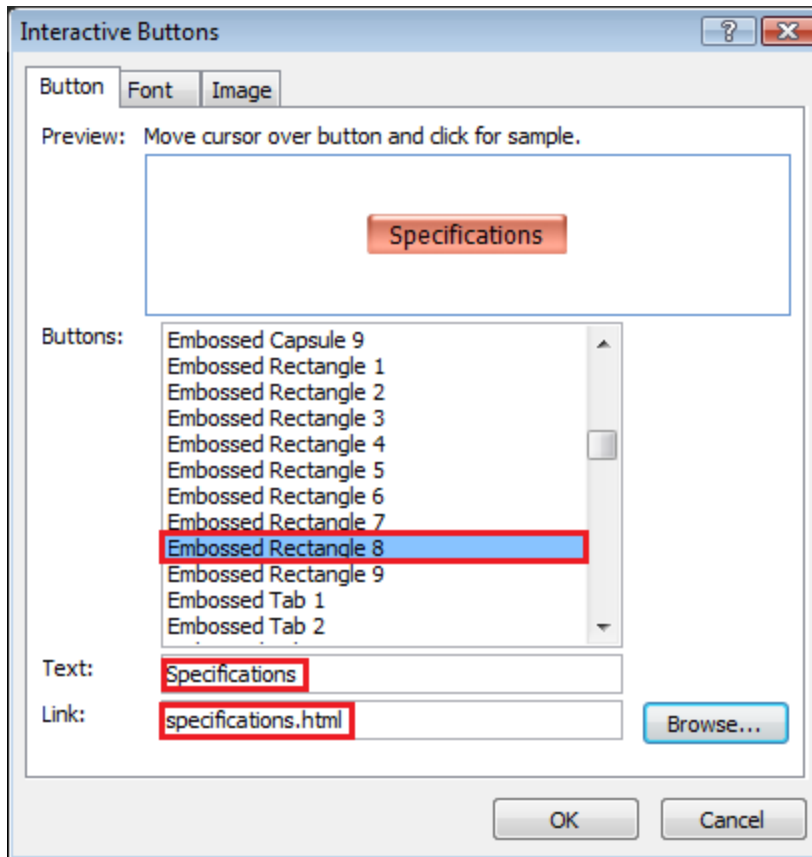
1. Open the homepage (**index.html**) from the tabs at the top of the work area or from the **Folder List**.
2. Highlight the four lines of text in **layer 3** and press **Backspace** on your keyboard.  
Make sure you don't delete the layer that the links were in. Your cursor should be on the top-left side of this layer.



3. On the **Insert** menu, click **Interactive Button**.

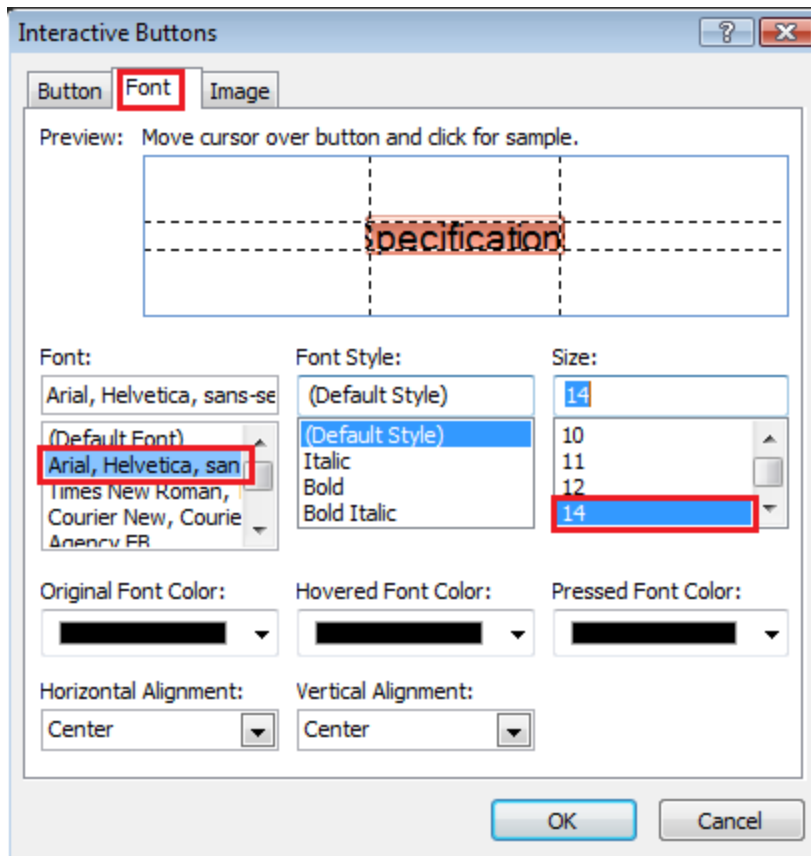


4. In the **Interactive Button** dialog, box on the **Button** tab, select **Embossed Rectangle 8** and enter **Specifications** in the **Text** field.
5. Click **Browse** next to the **Link** field.
6. In the **Edit Hyperlink** dialog box, select **specifications.html** and click **OK**.



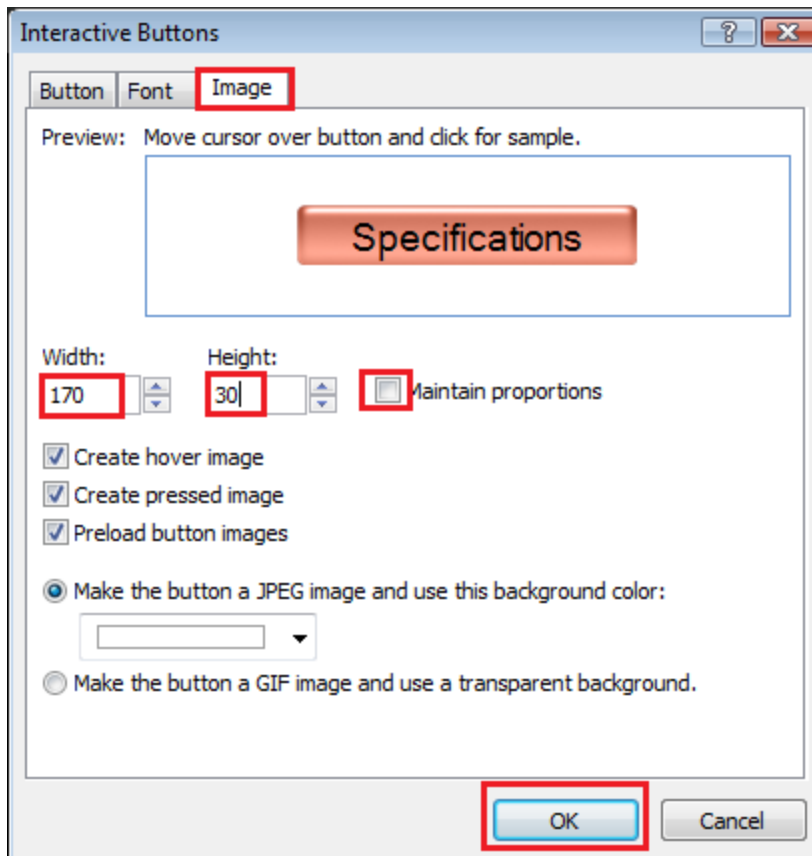
7. In the **Interactive Button** dialog box, open the **Font** tab and specify the values in the following table.

Property	Value
Font	Arial, Helvetica, sans-serif
Font Style	(Default Style)
Size	14

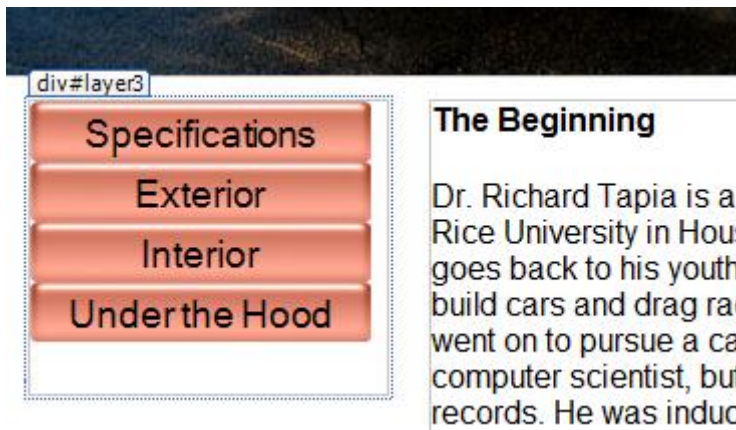


8. In the **Interactive Button** dialog box, open the **Image** tab and specify the values in the following table and click **OK**.

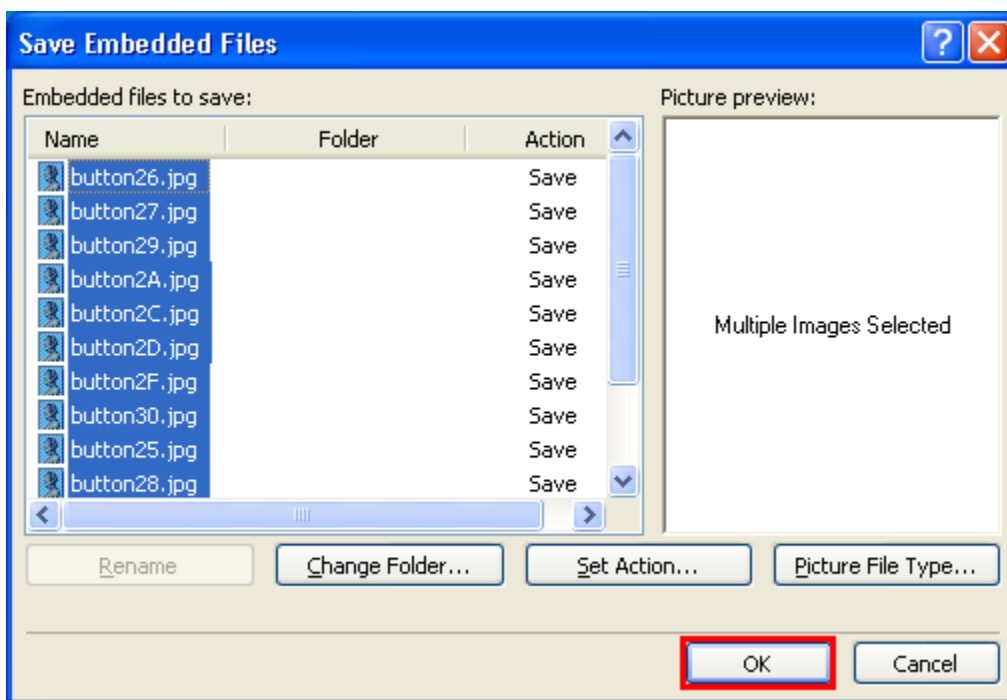
Property	Value
Maintain proportions	Unchecked
Width	170
Height	30



9. Repeat steps 3 to 8 for the remaining words in the menu: Exterior, Interior, and Under the Hood.
10. Use the same process to create interactive buttons on the **contentPageTemplate.dwt** file. The buttons created on the **contentPageTemplate.dwt** will appear on all of the pages in the rest of the Web site.



11. On the **File** menu, click **Save**.
12. On the **Save Embedded Files** dialog box, click **OK**.



13. Click on the tab for each page of the Web site. Observe that the interactive buttons appear on each. **Save each Page.**
14. On the **File** menu, point to **Preview in Browser** and click **Windows Internet Explorer 7.0 (1024 X 768)** (or whatever browser you have installed on your computer.)
15. Test your links and interactive buttons then close the browser window.





Congratulations, you have finished this tutorial and have created a simple standards-compliant Web site on the topic of Dr. Richard Tapia's 1970 Chevelle show car called Heavy Metal.

**Task 3 is complete.**

### **Extra Fun!**

In your **Heavy Metal Resources** folder we have included a folder called **Extra Images**. Use these images to enhance this Web site and give it more personality and interest.